

## TCR V beta 5a antibody [1C1] (FITC)

Cat. No. GTX79229

Host	Mouse
Clonality	Monoclonal
Isotype	IgG1
Applications	IHC-Fr, FCM, Activation
Reactivity	Human, Mouse, Primate

Package  
200 test

## Applications

## Application Note

\*Optimal dilutions/concentrations should be determined by the researcher.

Suggested dilution	Recommended dilution
IHC-Fr	Assay dependent
FCM	2 µg/test
Activation	Assay dependent

Not tested in other applications.

## Properties

Form	Liquid
Buffer	PBS, 0.5% BSA, Glycerol
Preservative	0.1% Sodium azide
Storage	Store as concentrated solution. Centrifuge briefly prior to opening vial. Store at 4°C. Protect from light.
Concentration	0.5 mg/ml (Please refer to the vial label for the specific concentration.)
Immunogen	Human TCR V beta 5(a)
Purification	Protein G purified
Conjugation	Fluorescein isothiocyanate (FITC) <a href="#">Wavelength</a>

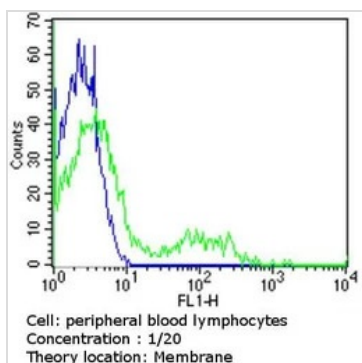
## Note

For laboratory research use only. Not for any clinical, therapeutic, or diagnostic use in humans or animals. Not for animal or human consumption.

Purchasers shall not, and agree not to enable third parties to, analyze, copy, reverse engineer or otherwise attempt to determine the structure or sequence of the product.

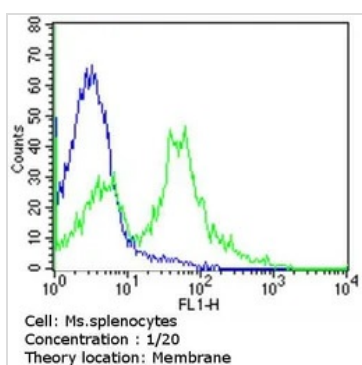


For full product information, images and publications, please visit our [website](#).

**DATA IMAGES**

**GTX79229 FCM Image**

FACS analysis of PBMC cells using GTX79229 TCR V beta 5a antibody [1C1] (FITC) compared to an isotype control (blue).

Dilution : 2 ug/test incubated for 30 min at 4°C


**GTX79229 FCM Image**

FACS analysis of mouse splenocytes using GTX79229 TCR V beta 5a antibody [1C1] (FITC) compared to an isotype control (blue).

Dilution : 2 ug/test incubated for 30 min at room temperature



For full product information, images and publications, please visit our [website](https://www.genetex.com).