

## TCR V alpha 12.1 antibody [6D6.6]

**Cat. No. GTX79230**

<b>Host</b>	Mouse
<b>Clonality</b>	Monoclonal
<b>Isotype</b>	IgG1
<b>Applications</b>	WB, IHC-Fr, FCM, IP, Activation, IHC
<b>Reactivity</b>	Human, Mouse, Rat

**Package**

200 µg

## Applications

**Application Note**

\*Optimal dilutions/concentrations should be determined by the researcher.

Suggested dilution	Recommended dilution
WB	1:1-1:100
IHC-Fr	Assay dependent
FCM	1-2 µg/test
IP	Assay dependent
Activation	Assay dependent
IHC	Assay dependent

Not tested in other applications.

## Properties

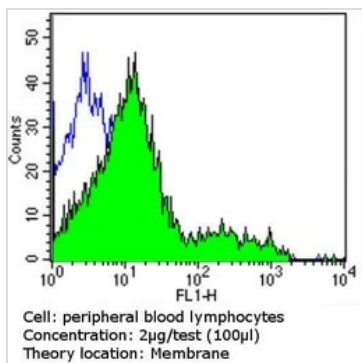
<b>Form</b>	Liquid
<b>Buffer</b>	PBS, 0.5% BSA
<b>Preservative</b>	0.1% Sodium azide
<b>Storage</b>	Store as concentrated solution. Centrifuge briefly prior to opening vial. For short-term storage (1-2 weeks), store at 4°C. For long-term storage, aliquot and store at -20°C or below. Avoid multiple freeze-thaw cycles.
<b>Concentration</b>	0.15 mg/ml (Please refer to the vial label for the specific concentration.)
<b>Immunogen</b>	Human TCR V alpha 12.1
<b>Purification</b>	Protein G purified
<b>Conjugation</b>	Unconjugated

For full product information, images and publications, please visit our [website](#).

For laboratory research use only. Not for any clinical, therapeutic, or diagnostic use in humans or animals. Not for animal or human consumption.

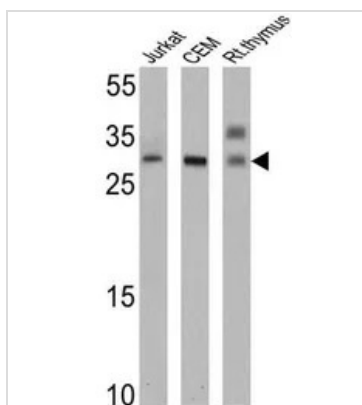
**Note**

Purchasers shall not, and agree not to enable third parties to, analyze, copy, reverse engineer or otherwise attempt to determine the structure or sequence of the product.

**DATA IMAGES**

**GTx79230 FCM Image**

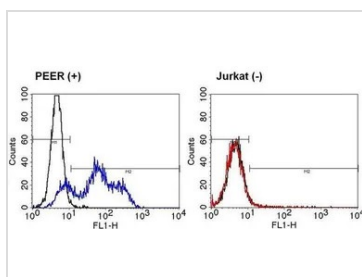
FACS analysis of PBMC cells using GTx79230 TCR V alpha 12.1 antibody [6D6.6] compared to an isotype control (blue).

Dilution : 2 ug/test incubated for 30 min at 4°C


**GTx79230 WB Image**

WB analysis of 25 ug of Jurkat (lane 1), CEM (lane 2) and rat thymus (lane 3) cell lysates using GTx79230 TCR V alpha 12.1 antibody [6D6.6].

Dilution : 1:10


**GTx79230 FCM Image**

FACS analysis of positive PEER cells (left panel) or negative control Jurkat cells (right panel) using GTx79230 TCR V alpha 12.1 antibody [6D6.6].

Dilution : 5ul of primary antibody were used per test



For full product information, images and publications, please visit our [website](http://www.genetex.com).