

TCR V delta 2 antibody [15D]

Cat. No. GTX79231

Host	Mouse
Clonality	Monoclonal
Isotype	IgG1
Applications	WB, IHC-Fr, FCM, IP, Activation
Reactivity	Human, Drosophila, Rhesus Monkey, Primate

Package
200 µg

Applications

Application Note

*Optimal dilutions/concentrations should be determined by the researcher.

Suggested dilution	Recommended dilution
WB	1:1-1:100
IHC-Fr	Assay dependent
FCM	1-2 µg/test
IP	Assay dependent
Activation	Assay dependent

Not tested in other applications.

Properties

Form	Liquid
Buffer	PBS, 0.5% BSA
Preservative	0.1% Sodium azide
Storage	Store as concentrated solution. Centrifuge briefly prior to opening vial. For short-term storage (1-2 weeks), store at 4°C. For long-term storage, aliquot and store at -20°C or below. Avoid multiple freeze-thaw cycles.
Concentration	0.15 mg/ml (Please refer to the vial label for the specific concentration.)
Immunogen	Human TCR V delta 2
Purification	Protein A purified
Conjugation	Unconjugated

Note

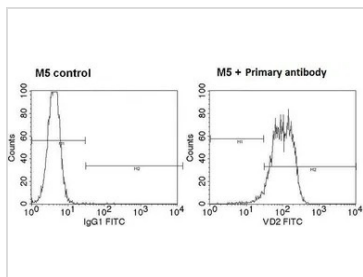
For laboratory research use only. Not for any clinical, therapeutic, or diagnostic use in humans or animals. Not for animal or human consumption.

Purchasers shall not, and agree not to enable third parties to, analyze, copy, reverse engineer or otherwise attempt to determine the structure or sequence of the product.



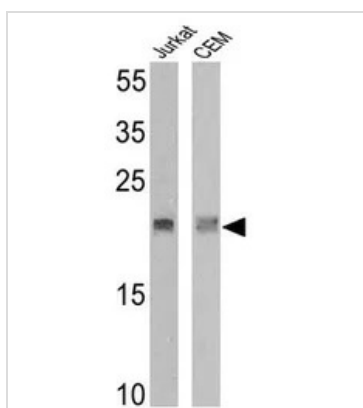
For full product information, images and publications, please visit our [website](#).

DATA IMAGES



GTX79231 FCM Image

FACS analysis of M5 T cells using GTX79231 TCR V delta 2 antibody [15D].
Dilution : 5ul of primary antibody were used per test



GTX79231 WB Image

WB analysis of 25 ug of Jurkat (lane 1) and CEM (lane 2) cell lysates using GTX79231 TCR V delta 2 antibody [15D].
Dilution : 1:10



For full product information, images and publications, please visit our [website](#).