

Cyclophilin 40 antibody

Cat. No. GTX79245

Host	Rabbit
Clonality	Polyclonal
Isotype	IgG
Applications	WB, ICC/IF, IHC-P, IHC-Fr, FCM, IP, Gel supershift assays, IHC
Reactivity	Human, Mouse, Rat, Rabbit, Bovine, Chicken, Primate

References (1)

Package

100 µl

Applications

Application Note

*Optimal dilutions/concentrations should be determined by the researcher.

Suggested dilution	Recommended dilution
WB	1:1,000
ICC/IF	1:200
IHC-P	Assay dependent
IHC-Fr	1:100
FCM	Assay dependent
IP	Assay dependent
Gel supershift assays	Assay dependent
IHC	Assay dependent

Not tested in other applications.

Calculated MW	41 kDa. (Note)
Product Note	This antibody does not cross-react with CyPA.

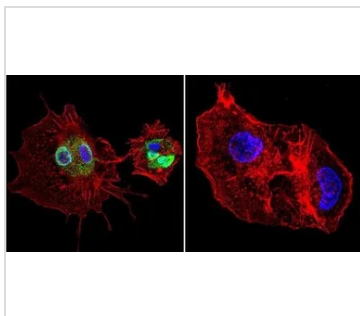
Properties

Form	Liquid
Buffer	PBS, 0.1% BSA
Preservative	0.05% Sodium azide
Storage	Store as concentrated solution. Centrifuge briefly prior to opening vial. For short-term storage (1-2 weeks), store at 4°C. For long-term storage, aliquot and store at -20°C or below. Avoid multiple freeze-thaw cycles.
Concentration	1 mg/ml (Please refer to the vial label for the specific concentration.)
Immunogen	Synthetic peptide corresponding to residues CA(356) Q K D K E K A V Y A K M F A(370) of human Cyp-40.



For full product information, images and publications, please visit our [website](#).

Purification	Purified IgG
Conjugation	Unconjugated
Note	<p>For laboratory research use only. Not for any clinical, therapeutic, or diagnostic use in humans or animals. Not for animal or human consumption.</p> <p>Purchasers shall not, and agree not to enable third parties to, analyze, copy, reverse engineer or otherwise attempt to determine the structure or sequence of the product.</p>

DATA IMAGES

GTX79245 ICC/IF Image

ICC/IF analysis of HepG2 cells using GTX79245 Cyclophilin 40 antibody. Cells were probed without (right) or with(left) an antibody.

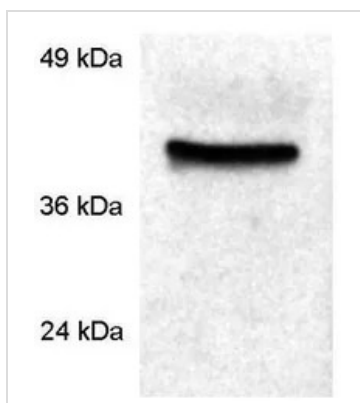
Green : Primary antibody

Blue : Nuclei

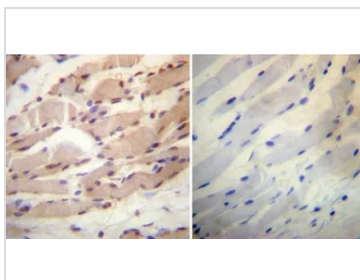
Red : Actin

Fixation : formaldehyde

Dilution : 1:200 overnight at 4°C


GTX79245 WB Image

WB analysis of rat spleen extracts using GTX79245 Cyclophilin 40 antibody.


GTX79245 IHC-P Image

IHC-P analysis of human skeletal muscle tissue using GTX79245 Cyclophilin 40 antibody.

Left : Primary antibody

Right : Negative control without primary antibody

Antigen retrieval : heat induced antigen retrieval was performed using 10mM sodium citrate (pH6.0) buffer, microwaved for 8-15 minutes

Dilution : 1:100



For full product information, images and publications, please visit our [website](https://www.genetex.com).