

JunB antibody

Cat. No. GTX79258

Host	Rabbit
Clonality	Polyclonal
Isotype	IgG
Applications	WB, ICC/IF, FCM, IP, ChIP assay
Reactivity	Human, Mouse, Rat

References (1)

Package

200 µg

Applications

Application Note

*Optimal dilutions/concentrations should be determined by the researcher.

Suggested dilution	Recommended dilution
WB	10 µg/ml
ICC/IF	2µg/ml
FCM	3-5 µg/10 ⁶ cells
IP	Assay dependent
ChIP assay	1-3 µl

Not tested in other applications.

Calculated MW 36 kDa. ([Note](#))

Properties

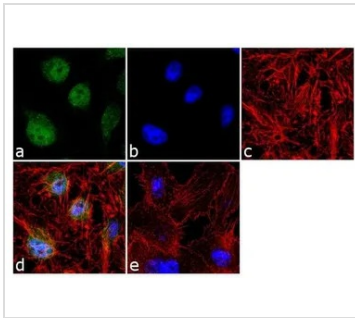
Form	Liquid
Preservative	No preservatives
Storage	Store as concentrated solution. Centrifuge briefly prior to opening vial. For short-term storage (1-2 weeks), store at 4°C. For long-term storage, aliquot and store at -20°C or below. Avoid multiple freeze-thaw cycles.
Concentration	Batch dependent (Please refer to the vial label for the specific concentration.)
Immunogen	Synthetic peptide corresponding to residues D(45) P Y R G L K G P G A R G P G P E(61) of mouse JunB.
Purification	Purified IgG
Conjugation	Unconjugated

Note

For laboratory research use only. Not for any clinical, therapeutic, or diagnostic use in humans or animals. Not for animal or human consumption.

Purchasers shall not, and agree not to enable third parties to, analyze, copy, reverse engineer or otherwise attempt to determine the structure or sequence of the product.

For full product information, images and publications, please visit our [website](#).

DATA IMAGES

GTx79258 ICC/IF Image

ICC/IF analysis of PC-3 cells using GTx79258 JunB antibody. Panel e is a no primary antibody control.

Green : Primary antibody

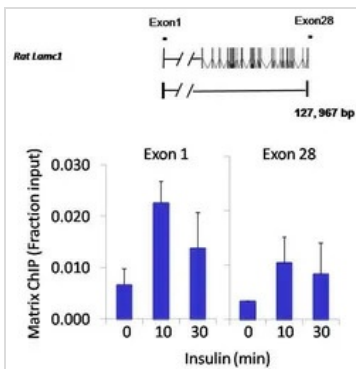
Blue : Nuclei

Red : Actin

Fixation : 4% paraformaldehyde

Permeabilization : 0.1% Triton X-100 for 10 minute

Dilution : 2 µg/ml in 0.1% BSA and incubated for 3 hours at room temperature


GTx79258 ChIP assay Image

ChIP analysis of 1×10^6 HTC-IR rat hepatoma cells treated with insulin for 0, 10, and 30 minutes using GTx79258 JunB antibody. Immunoprecipitation was performed using a multiplex microplate Matrix ChIP assay (refer to PMID: 22098709). The precipitated DNA was detected by PCR with primer set targeting to exon-1 or exon-28 of the LAMC1 gene.

IP reaction : 1.0ul antibody / 100ul sample



For full product information, images and publications, please visit our [website](http://www.genetex.com).