

ROR alpha antibody

Cat. No. GTX79267

Host	Rabbit
Clonality	Polyclonal
Isotype	IgG
Applications	WB, ChIP assay
Reactivity	Human, Mouse

Package
100 µg

Applications

Application Note

*Optimal dilutions/concentrations should be determined by the researcher.

Suggested dilution	Recommended dilution
WB	1:1000
ChIP assay	Assay dependent

Not tested in other applications.

Calculated MW 59 kDa. ([Note](#))**Product Note** This antibody is specific for alpha isotypes.

Properties

Form	Liquid
Buffer	PBS, 0.1% BSA
Preservative	0.05% Sodium azide
Storage	Store as concentrated solution. Centrifuge briefly prior to opening vial. For short-term storage (1-2 weeks), store at 4°C. For long-term storage, aliquot and store at -20°C or below. Avoid multiple freeze-thaw cycles.
Concentration	1 mg/ml (Please refer to the vial label for the specific concentration.)
Immunogen	Synthetic peptide corresponding to residues K(541) E L F T S E F E P A M Q I D G(556) of human ROR alpha.
Purification	Purified by antigen-affinity chromatography
Conjugation	Unconjugated

Note

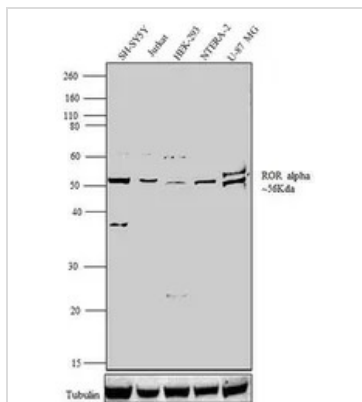
For laboratory research use only. Not for any clinical, therapeutic, or diagnostic use in humans or animals. Not for animal or human consumption.

Purchasers shall not, and agree not to enable third parties to, analyze, copy, reverse engineer or otherwise attempt to determine the structure or sequence of the product.



For full product information, images and publications, please visit our [website](#).

DATA IMAGES



GTX79267 WB Image

WB analysis of whole cell extracts (30 µg lysate) of SH-SY5Y (lane 1), Jurkat (Lane 2), HEK-293 (lane 3), NTERA-2 (Lane 4), and U-87 MG (Lane 5) using GTX79267 ROR alpha antibody.

Dilution : 1:1000



For full product information, images and publications, please visit our [website](https://www.genetex.com).