

SREBP1 antibody

Cat. No. GTX79299

Host	Rabbit
Clonality	Polyclonal
Isotype	IgG
Applications	WB, ICC/IF
Reactivity	Human, Mouse, Rat

References (14)

Package

100 µg

Applications

Application Note

*Optimal dilutions/concentrations should be determined by the researcher.

Suggested dilution	Recommended dilution
WB	1:500-1:5000
ICC/IF	1:50-1:500

Not tested in other applications.

Calculated MW 121 kDa. ([Note](#))

Properties

Form	Liquid
Buffer	PBS, 0.1% BSA
Preservative	0.05% Sodium azide
Storage	Store as concentrated solution. Centrifuge briefly prior to opening vial. For short-term storage (1-2 weeks), store at 4°C. For long-term storage, aliquot and store at -20°C or below. Avoid multiple freeze-thaw cycles.
Concentration	1 mg/ml (Please refer to the vial label for the specific concentration.)
Immunogen	Synthetic peptide corresponding to residues M(32) L Q L I N N Q D S D F P G L F(47) of mouse SREBP 1.
Purification	Purified by antigen-affinity chromatography
Conjugation	Unconjugated

Note

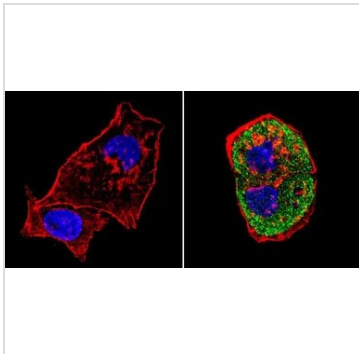
For laboratory research use only. Not for any clinical, therapeutic, or diagnostic use in humans or animals. Not for animal or human consumption.

Purchasers shall not, and agree not to enable third parties to, analyze, copy, reverse engineer or otherwise attempt to determine the structure or sequence of the product.



For full product information, images and publications, please visit our [website](#).

DATA IMAGES

**GTX79299 ICC/IF Image**

ICC/IF analysis of HepG2 cells using GTX79299 SREBP1 antibody. Cells were probed without (left) or with(right) an antibody.

Green : Primary antibody

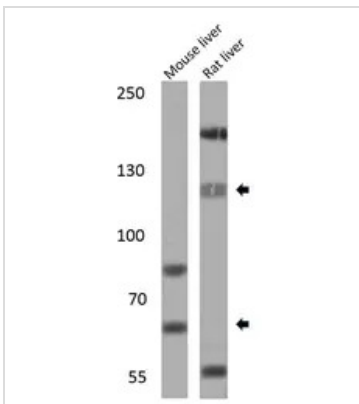
Blue : Nuclei

Red : Actin

Fixation : Formalin

Permeabilization : 0.1% Triton X-100 in TBS for 5-10 minute

Dilution : 1:100 and incubated overnight at 4°C

**GTX79299 WB Image**

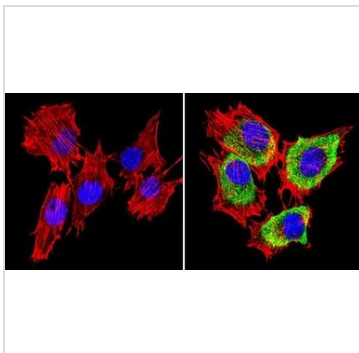
WB analysis of various samples using GTX79299 SREBP1 antibody.

Lane 1: mouse liver lysate

Lane 2: rat liver lysate

Loading: 25 µg per lane

Dilution: 1:1000

**GTX79299 ICC/IF Image**

ICC/IF analysis of C2C12 cells using GTX79299 SREBP1 antibody. Cells were probed without (left) or with(right) an antibody.

Green : Primary antibody

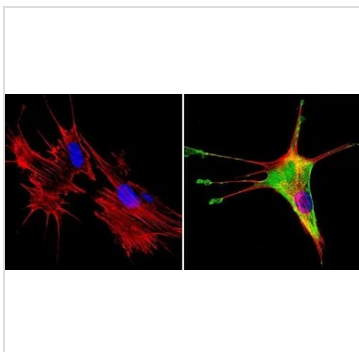
Blue : Nuclei

Red : Actin

Fixation : Formalin

Permeabilization : 0.1% Triton X-100 in TBS for 5-10 minute

Dilution : 1:100 and incubated overnight at 4°C

**GTX79299 ICC/IF Image**

ICC/IF analysis of NIH-3T3 cells using GTX79299 SREBP1 antibody. Cells were probed without (left) or with(right) an antibody.

Green : Primary antibody

Blue : Nuclei

Red : Actin

Fixation : Formalin

Permeabilization : 0.1% Triton X-100 in TBS for 5-10 minute

Dilution : 1:100 and incubated overnight at 4°C



For full product information, images and publications, please visit our [website](#).