

GnRH antibody

Cat. No. GTX79310

Host	Rabbit
Clonality	Polyclonal
Isotype	IgG
Applications	ICC/IF, IHC-P, IHC (Free Floating)
Reactivity	Mouse, Amphibians

Package
100 µg

Applications

Application Note

*Optimal dilutions/concentrations should be determined by the researcher.

Suggested dilution	Recommended dilution
ICC/IF	Assay dependent
IHC-P	1:200-1:1000
IHC (Free Floating)	Assay dependent

Not tested in other applications.

Properties

Form	Liquid
Buffer	PBS, 0.1% BSA
Preservative	0.05% Sodium azide
Storage	Store as concentrated solution. Centrifuge briefly prior to opening vial. For short-term storage (1-2 weeks), store at 4°C. For long-term storage, aliquot and store at -20°C or below. Avoid multiple freeze-thaw cycles.
Concentration	1 mg/ml (Please refer to the vial label for the specific concentration.)
Immunogen	Synthetic peptide corresponding to residues pyroE(22) H W S Y G L R P G-NH ₂ (32) of mouse GnRH.
Purification	Purified by antigen-affinity chromatography
Conjugation	Unconjugated

Note

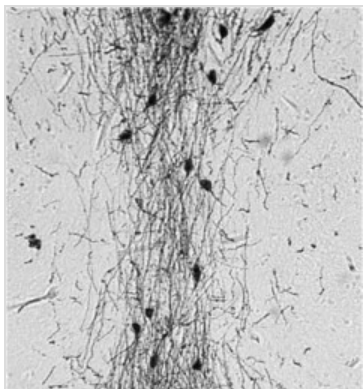
For laboratory research use only. Not for any clinical, therapeutic, or diagnostic use in humans or animals. Not for animal or human consumption.

Purchasers shall not, and agree not to enable third parties to, analyze, copy, reverse engineer or otherwise attempt to determine the structure or sequence of the product.



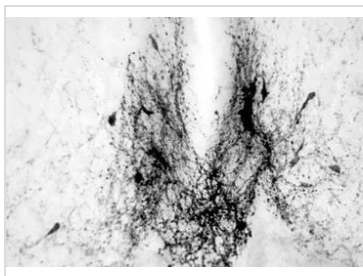
For full product information, images and publications, please visit our [website](#).

DATA IMAGES



GTX79310 IHC-P Image

IHC-P analysis of Hyla cinerea (green treefrog) forebrain tissue using GTX79310 GnRH antibody.
Dilution : 1:1000



GTX79310 IHC-P Image

IHC-P analysis of mouse embryo brain tissue using GTX79310 GnRH antibody.



For full product information, images and publications, please visit our [website](#).