

AP2B1 antibody

Cat. No. GTX79316

Host	Rabbit
Clonality	Polyclonal
Isotype	IgG
Applications	WB, ICC/IF, FCM
Reactivity	Human, Mouse, Rat, Bovine

References (1)

Package

100 µg

Applications

Application Note

*Optimal dilutions/concentrations should be determined by the researcher.

Suggested dilution	Recommended dilution
WB	2 µg/mL
ICC/IF	2 µg/ml
FCM	3-5 µg/10 ⁶ cells

Not tested in other applications.

Calculated MW 105 kDa. ([Note](#))

Properties

Form	Liquid
Buffer	PBS, 0.1% BSA
Preservative	0.05% Sodium azide
Storage	Store as concentrated solution. Centrifuge briefly prior to opening vial. For short-term storage (1-2 weeks), store at 4°C. For long-term storage, aliquot and store at -20°C or below. Avoid multiple freeze-thaw cycles.
Concentration	1 mg/ml (Please refer to the vial label for the specific concentration.)
Immunogen	Synthetic peptide corresponding to residues I(588) H R K H L P I H H G S T D A G D S P(606) of human beta Adaptin 2.
Purification	Purified by antigen-affinity chromatography
Conjugation	Unconjugated

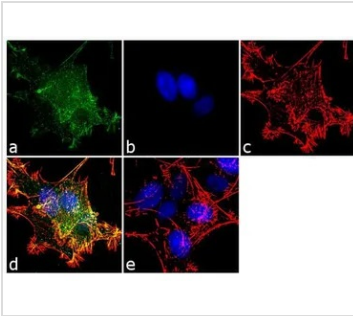
Note

For laboratory research use only. Not for any clinical, therapeutic, or diagnostic use in humans or animals. Not for animal or human consumption.

Purchasers shall not, and agree not to enable third parties to, analyze, copy, reverse engineer or otherwise attempt to determine the structure or sequence of the product.



For full product information, images and publications, please visit our [website](#).

DATA IMAGES

GTX79316 ICC/IF Image

ICC/IF analysis of SH-SY5Y cells using GTX79316 AP2B1 antibody. Panel e is a no primary antibody control.

Green : Primary antibody

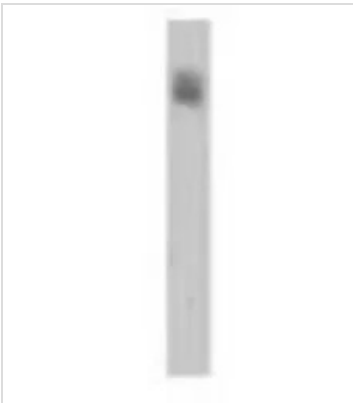
Blue : Nuclei

Red : Actin

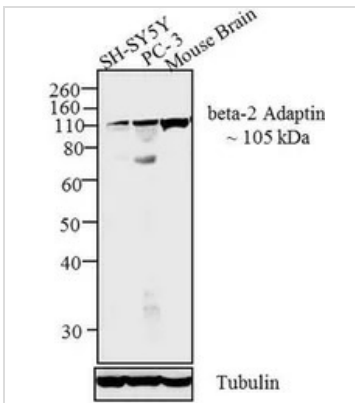
Fixation : 4% paraformaldehyde

Permeabilization : 0.1% Triton X-100 for 10 minute

Dilution : 2 µg/ml in 0.1% BSA and incubated for 3 hours at room temperature


GTX79316 WB Image

WB analysis of bovine brain using GTX79316 AP2B1 antibody.


GTX79316 WB Image

WB analysis of membrane enriched and tissue extract (30 ug) of SH-SY5Y (Lane 1), PC-3 (Lane 2) and Mouse Brain (Lane 3) using GTX79316 AP2B1 antibody.

Dilution : 2 µg/ml



For full product information, images and publications, please visit our [website](https://www.genetex.com).