

TIMP2 antibody [F27 P3 A4]

Cat. No. GTX79355

Host	Mouse
Clonality	Monoclonal
Isotype	IgG2
Applications	WB, ICC/IF, IHC-P
Reactivity	Human, Mouse

Package
100 µg

Applications

Application Note

*Optimal dilutions/concentrations should be determined by the researcher.

Suggested dilution	Recommended dilution
WB	1:500
ICC/IF	1-2 µg/ml
IHC-P	1:50-1:500

Not tested in other applications.

Properties

Form	Liquid
Buffer	PBS, 0.1% BSA
Preservative	0.05% Sodium azide
Storage	Store as concentrated solution. Centrifuge briefly prior to opening vial. For short-term storage (1-2 weeks), store at 4°C. For long-term storage, aliquot and store at -20°C or below. Avoid multiple freeze-thaw cycles.
Concentration	1 mg/ml (Please refer to the vial label for the specific concentration.)
Immunogen	Synthetic peptide corresponding to residues D(56) S G N D I Y G N P I(66) of mouse TIMP-2.
Purification	Protein A purified
Conjugation	Unconjugated

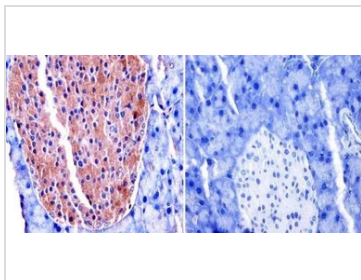
Note

For laboratory research use only. Not for any clinical, therapeutic, or diagnostic use in humans or animals. Not for animal or human consumption.

Purchasers shall not, and agree not to enable third parties to, analyze, copy, reverse engineer or otherwise attempt to determine the structure or sequence of the product.



For full product information, images and publications, please visit our [website](#).

DATA IMAGES

GTx79355 IHC-P Image

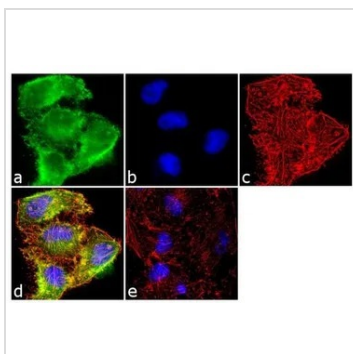
IHC-P analysis of mouse pancreas tissue using GTx79355 TIMP2 antibody [F27 P3 A4].

Left : Primary antibody

Right : Negative control without primary antibody

Antigen retrieval : heat induced antigen retrieval was performed using 10mM sodium citrate (pH6.0) buffer, microwaved for 8-15 minutes

Dilution : 1:100


GTx79355 ICC/IF Image

ICC/IF analysis of HeLa cells using GTx79355 TIMP2 antibody [F27 P3 A4]. Panel e is a no primary antibody control.

Green : Primary antibody

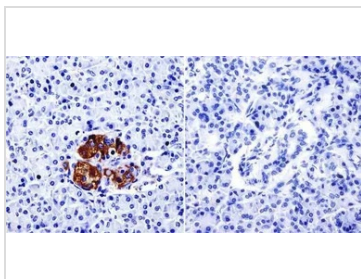
Blue : Nuclei

Red : Actin

Fixation : 4% paraformaldehyde

Permeabilization : 0.1% Triton X-100 for 10 minute

Dilution : 2 µg/ml in 0.1% BSA and incubated for 3 hours at room temperature


GTx79355 IHC-P Image

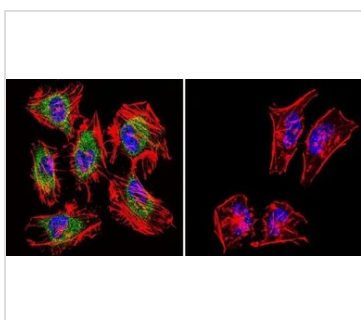
IHC-P analysis of human pancreas tissue using GTx79355 TIMP2 antibody [F27 P3 A4].

Left : Primary antibody

Right : Negative control without primary antibody

Antigen retrieval : heat induced antigen retrieval was performed using 10mM sodium citrate (pH6.0) buffer, microwaved for 8-15 minutes

Dilution : 1:500


GTx79355 ICC/IF Image

ICC/IF analysis of HeLa cells using GTx79355 TIMP2 antibody [F27 P3 A4]. Cells were probed without (right) or with(left) an antibody.

Green : Primary antibody

Blue : Nuclei

Red : Actin

Fixation : formaldehyde

Dilution : 1:200 overnight at 4°C



For full product information, images and publications, please visit our [website](https://www.genetex.com).