

ZNF259 antibody [LG1]

Cat. No. GTX79362

Host	Mouse
Clonality	Monoclonal
Isotype	IgG
Applications	WB, ICC/IF, IP, IHC
Reactivity	Human, Mouse, Rabbit

Package
100 µg

Applications

Application Note

*Optimal dilutions/concentrations should be determined by the researcher.

Suggested dilution	Recommended dilution
WB	1/500-1/2,000
ICC/IF	1:500
IP	Assay dependent
IHC	Assay dependent

Not tested in other applications.

Calculated MW 51 kDa. ([Note](#))

Properties

Form	Liquid
Buffer	PBS
Preservative	0.05% Sodium azide
Storage	Store as concentrated solution. Centrifuge briefly prior to opening vial. For short-term storage (1-2 weeks), store at 4°C. For long-term storage, aliquot and store at -20°C or below. Avoid multiple freeze-thaw cycles.
Concentration	1 mg/ml (Please refer to the vial label for the specific concentration.)
Immunogen	murine ZPR1 protein
Purification	Protein G purified
Conjugation	Unconjugated

Note

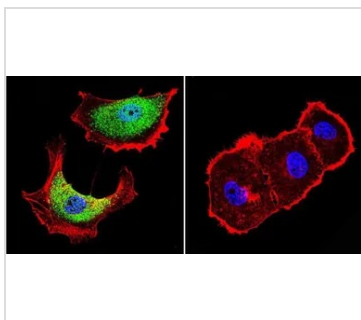
For laboratory research use only. Not for any clinical, therapeutic, or diagnostic use in humans or animals. Not for animal or human consumption.

Purchasers shall not, and agree not to enable third parties to, analyze, copy, reverse engineer or otherwise attempt to determine the structure or sequence of the product.



For full product information, images and publications, please visit our [website](#).

DATA IMAGES



GTX79362 ICC/IF Image

ICC/IF analysis of MCF-7 cells using GTX79362 ZNF259 antibody [LG1]. Cells were probed without (right) or with(left) an antibody.

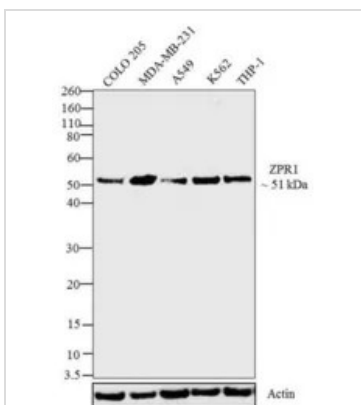
Green : Primary antibody

Blue : Nuclei

Red : Actin

Fixation : formaldehyde

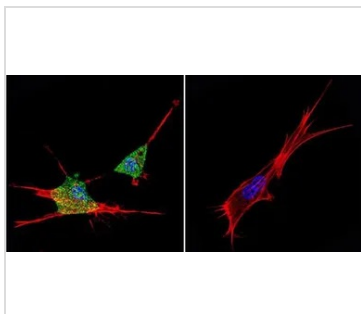
Dilution : 1:20 overnight at 4°C



GTX79362 WB Image

WB analysis of whole cell extracts (30 µg lysate) of COLO 205 (Lane 1), MDA-MB-231 (Lane 2), A549 (Lane 3), K562 (Lane4), THP-1 (Lane 5) using GTX79362 ZNF259 antibody [LG1].

Dilution : 1:500-1:2000



GTX79362 ICC/IF Image

ICC/IF analysis of NIH-3T3 cells using GTX79362 ZNF259 antibody [LG1]. Cells were probed without (right) or with(left) an antibody.

Green : Primary antibody

Blue : Nuclei

Red : Actin

Fixation : formaldehyde

Dilution : 1:20 overnight at 4°C



For full product information, images and publications, please visit our [website](#).