

## Serine Protease Inhibitor 2A (Spi2A) antibody [MoFo 29.2]

**Cat. No. GTX79365**

<b>Host</b>	Armenian Hamster
<b>Clonality</b>	Monoclonal
<b>Isotype</b>	IgG2b
<b>Applications</b>	WB, ICC/IF, IHC-P, ELISA
<b>Reactivity</b>	Human, Mouse, Hamster

**Package**  
100 µg

## Applications

**Application Note**

\*Optimal dilutions/concentrations should be determined by the researcher.

Suggested dilution	Recommended dilution
WB	1 µg/mL
ICC/IF	1:10-1:100
IHC-P	Assay dependent
ELISA	Assay dependent

Not tested in other applications.

**Calculated MW** 49 kDa. ( [Note](#) )

## Properties

<b>Form</b>	Liquid
<b>Buffer</b>	PBS, 0.1% BSA
<b>Preservative</b>	0.05% Sodium azide
<b>Storage</b>	Store as concentrated solution. Centrifuge briefly prior to opening vial. For short-term storage (1-2 weeks), store at 4°C. For long-term storage, aliquot and store at -20°C or below. Avoid multiple freeze-thaw cycles.
<b>Concentration</b>	1 mg/ml (Please refer to the vial label for the specific concentration.)
<b>Immunogen</b>	Synthetic peptide corresponding to residues N(418) P E R S M N F P N G E G A S S Q R L C(436) of hamster Spi2A protein.
<b>Purification</b>	Protein A purified
<b>Conjugation</b>	Unconjugated

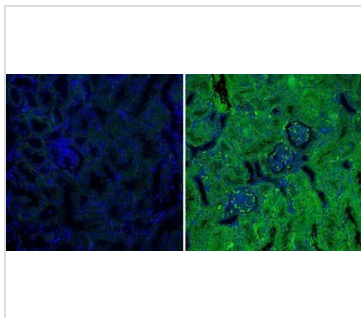
**Note**

For laboratory research use only. Not for any clinical, therapeutic, or diagnostic use in humans or animals. Not for animal or human consumption.

Purchasers shall not, and agree not to enable third parties to, analyze, copy, reverse engineer or otherwise attempt to determine the structure or sequence of the product.



For full product information, images and publications, please visit our [website](#).

**DATA IMAGES**

**GTX79365 IHC-P Image**

IHC-P analysis of mouse kidney tissue using GTX79365 Spi2A antibody [MoFo 29.2]. Tissue section was probed without (left) or with(right) an antibody.

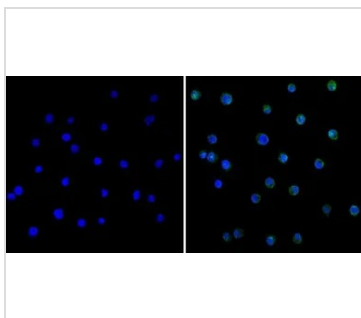
Green : Primary antibody

Blue : Nuclei

Fixation : Formalin

Permeabilization : 0.1% Triton X-100 in TBS for 5-10 minute

Dilution : 1:20 overnight at 4°C


**GTX79365 ICC/IF Image**

ICC/IF analysis of Jurkat cells using GTX79365 Spi2A antibody [MoFo 29.2]. Cells were probed without (left) or with(right) an antibody.

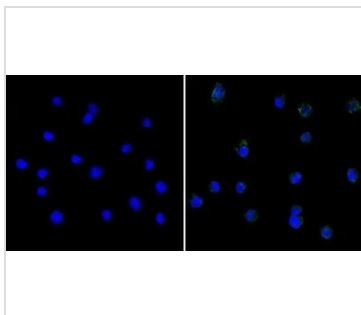
Green : Primary antibody

Blue : Nuclei

Fixation : Formalin

Permeabilization : 0.1% Triton X-100 in TBS for 5-10 minute

Dilution : 1:20 overnight at 4°C


**GTX79365 ICC/IF Image**

ICC/IF analysis of BaF-3 cells using GTX79365 Spi2A antibody [MoFo 29.2]. Cells were probed without (left) or with(right) an antibody.

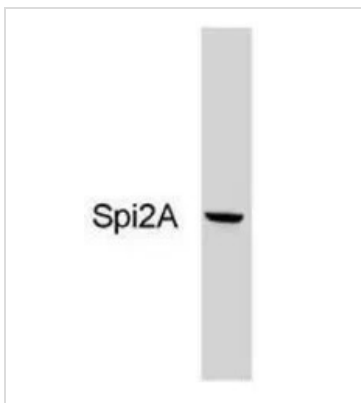
Green : Primary antibody

Blue : Nuclei

Fixation : Formalin

Permeabilization : 0.1% Triton X-100 in TBS for 5-10 minute

Dilution : 1:20 overnight at 4°C


**GTX79365 WB Image**

WB analysis of NIH3T3 cells using GTX79365 Spi2A antibody [MoFo 29.2].



For full product information, images and publications, please visit our [website](https://www.genetex.com).