

## TCR Beta F1 antibody [8A3]

**Cat. No. GTX79388**

<b>Host</b>	Mouse
<b>Clonality</b>	Monoclonal
<b>Isotype</b>	IgG1
<b>Applications</b>	WB, ICC/IF, IHC-P, FCM, IP, ELISA, IHC
<b>Reactivity</b>	Human, Mouse, Yeast, Primate

References ( 3 )

Package

200 µg

## Applications

**Application Note**

\*Optimal dilutions/concentrations should be determined by the researcher.

Suggested dilution	Recommended dilution
WB	Assay dependent
ICC/IF	Assay dependent
IHC-P	Assay dependent
FCM	2 µg/test
IP	Assay dependent
ELISA	Assay dependent
IHC	Assay dependent

Not tested in other applications.

## Properties

<b>Form</b>	Liquid
<b>Buffer</b>	PBS, 0.5% BSA
<b>Preservative</b>	0.1% Sodium azide
<b>Storage</b>	Store as concentrated solution. Centrifuge briefly prior to opening vial. For short-term storage (1-2 weeks), store at 4°C. For long-term storage, aliquot and store at -20°C or below. Avoid multiple freeze-thaw cycles.
<b>Concentration</b>	0.15 mg/ml (Please refer to the vial label for the specific concentration.)
<b>Immunogen</b>	Human TCR β chain constant region
<b>Purification</b>	Protein G purified
<b>Conjugation</b>	Unconjugated

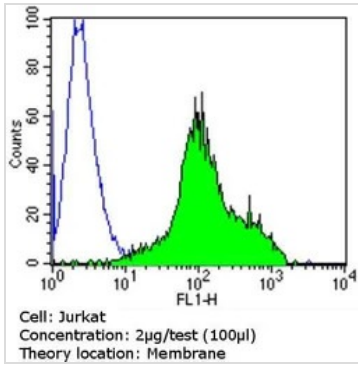


For full product information, images and publications, please visit our [website](#).

For laboratory research use only. Not for any clinical, therapeutic, or diagnostic use in humans or animals. Not for animal or human consumption.

**Note**  
Purchasers shall not, and agree not to enable third parties to, analyze, copy, reverse engineer or otherwise attempt to determine the structure or sequence of the product.

## DATA IMAGES

**GTX79388 FCM Image**

FACS analysis of Jurkat cells using GTX79388 TCR Beta F1 antibody [8A3] compared to an isotype control (blue).

Dilution : 2 ug/test for 60 min at room temperature

Fixation : 2% paraformaldehyde



For full product information, images and publications, please visit our [website](#).