

TCR Beta F1 antibody [8A3]

Cat. No. GTX79388

Host	Mouse
Clonality	Monoclonal
Isotype	IgG1
Applications	WB, ICC/IF, IHC-P, FCM, IP, ELISA, IHC
Reactivity	Human, Mouse, Yeast, Primate

References (3)

Package

200 µg

Applications

Application Note

*Optimal dilutions/concentrations should be determined by the researcher.

Suggested dilution	Recommended dilution
WB	Assay dependent
ICC/IF	Assay dependent
IHC-P	Assay dependent
FCM	2 µg/test
IP	Assay dependent
ELISA	Assay dependent
IHC	Assay dependent

Not tested in other applications.

Properties

Form	Liquid
Buffer	PBS, 0.5% BSA
Preservative	0.1% Sodium azide
Storage	Store as concentrated solution. Centrifuge briefly prior to opening vial. For short-term storage (1-2 weeks), store at 4°C. For long-term storage, aliquot and store at -20°C or below. Avoid multiple freeze-thaw cycles.
Concentration	0.15 mg/ml (Please refer to the vial label for the specific concentration.)
Immunogen	Human TCR β chain constant region
Purification	Protein G purified
Conjugation	Unconjugated



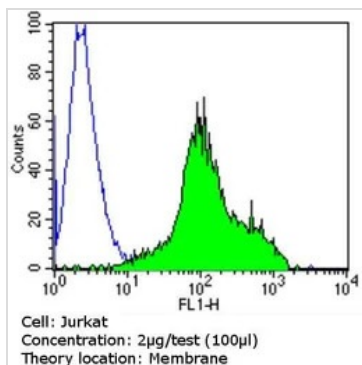
For full product information, images and publications, please visit our [website](#).

For laboratory research use only. Not for any clinical, therapeutic, or diagnostic use in humans or animals. Not for animal or human consumption.

Note

Purchasers shall not, and agree not to enable third parties to, analyze, copy, reverse engineer or otherwise attempt to determine the structure or sequence of the product.

DATA IMAGES

**GTX79388 FCM Image**

FACS analysis of Jurkat cells using GTX79388 TCR Beta F1 antibody [8A3] compared to an isotype control (blue).

Dilution : 2 ug/test for 60 min at room temperature

Fixation : 2% paraformaldehyde



For full product information, images and publications, please visit our [website](#).