

AGTR2 antibody

Cat. No. GTX79393

Host	Rabbit
Clonality	Polyclonal
Isotype	IgG
Applications	WB, ICC/IF, IHC-P
Reactivity	Human, Rat

References (1)

Package

100 µl

Applications

Application Note

*Optimal dilutions/concentrations should be determined by the researcher.

Suggested dilution	Recommended dilution
WB	1:5000
ICC/IF	1:250
IHC-P	1:2000

Not tested in other applications.

Calculated MW 41 kDa. ([Note](#))

Properties

Form	Liquid
Buffer	Serum
Preservative	0.02% Sodium azide
Storage	Store as concentrated solution. Centrifuge briefly prior to opening vial. For short-term storage (1-2 weeks), store at 4°C. For long-term storage, aliquot and store at -20°C or below. Avoid multiple freeze-thaw cycles.
Immunogen	Synthetic peptide corresponding to the C-terminal amino acids C(349)RKSSSLREMETFVS(363) of AGTR2
Purification	Unpurified
Conjugation	Unconjugated

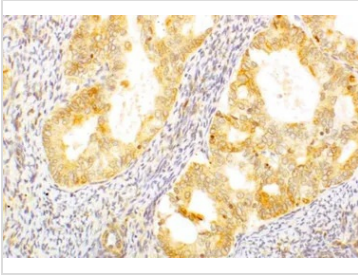
Note

For laboratory research use only. Not for any clinical, therapeutic, or diagnostic use in humans or animals. Not for animal or human consumption.

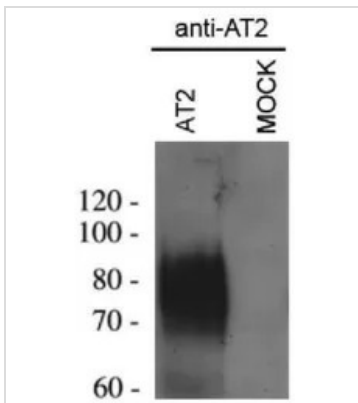
Purchasers shall not, and agree not to enable third parties to, analyze, copy, reverse engineer or otherwise attempt to determine the structure or sequence of the product.



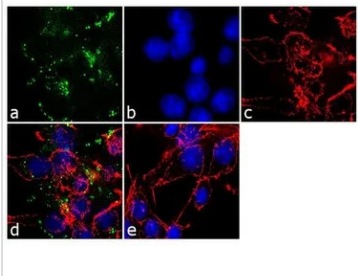
For full product information, images and publications, please visit our [website](#).

DATA IMAGES

GTX79393 IHC-P Image

IHC-P analysis of tissue using GTX79393 AGTR2 antibody.


GTX79393 WB Image

WB analysis of HEK293 cells overexpressing AT2 (AGTR2) protein using GTX79393 AGTR2 antibody.


GTX79393 ICC/IF Image

ICC/IF analysis of HEK293 cells using GTX79393 AGTR2 antibody. Panel e is a no primary antibody control.

Green : Primary antibody

Blue : Nuclei

Red : Actin

Fixation : 4% paraformaldehyde

Permeabilization : 0.1% Triton X-100 for 10 minute

Dilution : 1:250 dilution in 0.1% BSA and incubated for 3 hours at room temperature



For full product information, images and publications, please visit our [website](https://www.genetex.com).