

GM130 antibody

Cat. No. GTX79420

Host	Rabbit
Clonality	Polyclonal
Isotype	IgG
Applications	WB, ICC/IF, FCM
Reactivity	Human, Mouse, Bovine

References (1)

Package

100 µg

Applications

Application Note

*Optimal dilutions/concentrations should be determined by the researcher.

Suggested dilution	Recommended dilution
WB	1:500
ICC/IF	Assay dependent
FCM	1-20 µg/ml

Not tested in other applications.

Calculated MW 113 kDa. ([Note](#))

Properties

Form	Liquid
Buffer	PBS, 0.1% BSA
Preservative	0.05% Sodium azide
Storage	Store as concentrated solution. Centrifuge briefly prior to opening vial. For short-term storage (1-2 weeks), store at 4°C. For long-term storage, aliquot and store at -20°C or below. Avoid multiple freeze-thaw cycles.
Concentration	1 mg/ml (Please refer to the vial label for the specific concentration.)
Immunogen	Synthetic peptide corresponding to residues G(368) Q V M E S V R Q L Q M E R D K(383) of human GM130.
Purification	Purified by antigen-affinity chromatography
Conjugation	Unconjugated

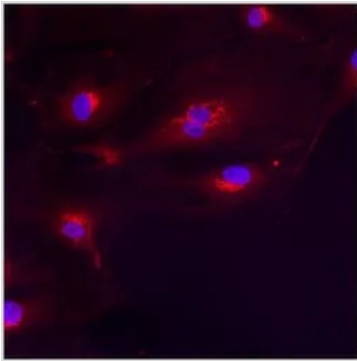
Note

For laboratory research use only. Not for any clinical, therapeutic, or diagnostic use in humans or animals. Not for animal or human consumption.

Purchasers shall not, and agree not to enable third parties to, analyze, copy, reverse engineer or otherwise attempt to determine the structure or sequence of the product.



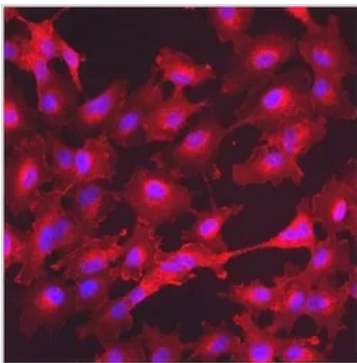
For full product information, images and publications, please visit our [website](#).

DATA IMAGES

GTX79420 ICC/IF Image

ICC/IF analysis of HMVEC Cells using GTX79420 GM130 antibody.

Red : Primary antibody

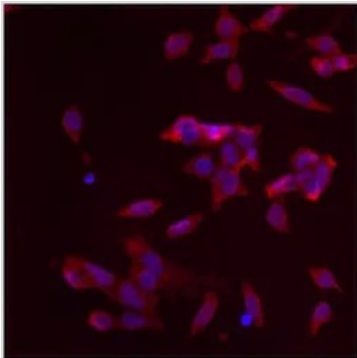
Blue : Nuclei


GTX79420 ICC/IF Image

ICC/IF analysis of A549 cells using GTX79420 GM130 antibody.

Red : Primary antibody

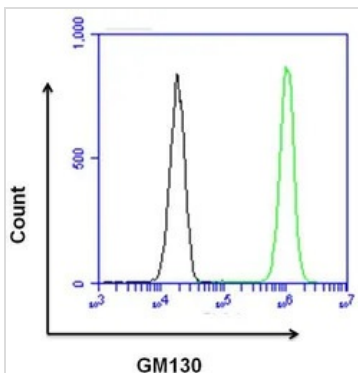
Blue : Nuclei


GTX79420 ICC/IF Image

ICC/IF analysis of p19 Cells using GTX79420 GM130 antibody.

Red : Primary antibody

Blue : Nuclei


GTX79420 FCM Image

FACS analysis of permeabilized, fixed HeLa cells using GTX79420 GM130 antibody.

Green histogram : Primary antibody

Black histogram : Isotype control antibody

Dilution : 10 µg/ml incubated for 1 hour on ice



For full product information, images and publications, please visit our [website](https://www.genetex.com).