

Placental Alkaline Phosphatase antibody [SP15] (ready-to-use)

Cat. No. GTX79434

Host	Rabbit
Clonality	Monoclonal
Isotype	IgG
Applications	IHC-P, IHC
Reactivity	Human

References (1)
Package
6 ml

Applications

Application Note

*Optimal dilutions/concentrations should be determined by the researcher.

Suggested dilution	Recommended dilution
IHC-P	Assay dependent
IHC	Assay dependent

Not tested in other applications.

Product Note

This antibody reacts with a membrane-bound isoenzyme (Regan and Nagao type) of Placental Alkaline Phosphatase (PLAP) occurring in the placenta during the 3rd trimester of gestation. This antibody is highly specific to PLAP and shows no cross-reaction with other isoenzymes of alkaline phosphatases.

Properties

Form	Liquid
Storage	Store as concentrated solution. Centrifuge briefly prior to opening vial. Store at 4°C.
Concentration	Batch dependent (Please refer to the vial label for the specific concentration.)
Immunogen	Recombinant protein encoding human Placental Alkaline Phosphatase (PLAP).
Purification	Purified IgG
Conjugation	Unconjugated

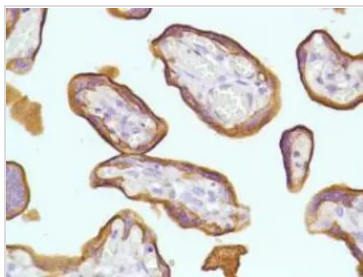
Note

For laboratory research use only. Not for any clinical, therapeutic, or diagnostic use in humans or animals. Not for animal or human consumption.

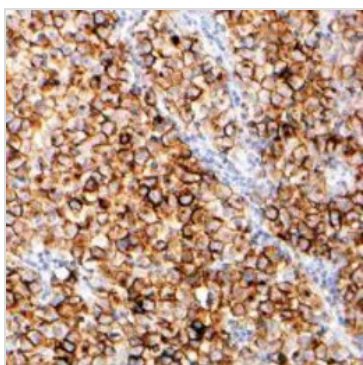
Purchasers shall not, and agree not to enable third parties to, analyze, copy, reverse engineer or otherwise attempt to determine the structure or sequence of the product.



For full product information, images and publications, please visit our [website](#).

DATA IMAGES

GTx79434 IHC Image

Human Placenta stained with anti-PLAP antibody


GTx79434 IHC Image

Human Seminoma stained with anti-PLAP antibody



For full product information, images and publications, please visit our [website](#).