

Vimentin antibody [SP20] (ready-to-use)

Cat. No. GTX79436

Host	Rabbit
Clonality	Monoclonal
Isotype	IgG
Applications	IHC-P
Reactivity	Human

Package
6 ml

Applications

Application Note

*Optimal dilutions/concentrations should be determined by the researcher.

Suggested dilution	Recommended dilution
IHC-P	Assay dependent

Note : Recommendations for antigen retrieval : Citrate Buffer pH 6.0 at room temperature for 30 mins.

Not tested in other applications.

Calculated MW 54 kDa. ([Note](#))

Properties

Form	Liquid
Buffer	Tissue culture supernatant with <0.1% sodium azide
Storage	Store as concentrated solution. Centrifuge briefly prior to opening vial. Store at 4°C.
Concentration	Batch dependent (Please refer to the vial label for the specific concentration.)
Immunogen	Recombinant human vimentin protein.
Purification	Unpurified
Conjugation	Unconjugated

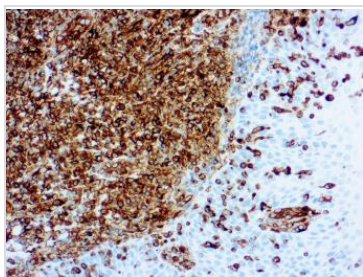
Note

For laboratory research use only. Not for any clinical, therapeutic, or diagnostic use in humans or animals. Not for animal or human consumption.

Purchasers shall not, and agree not to enable third parties to, analyze, copy, reverse engineer or otherwise attempt to determine the structure or sequence of the product.



For full product information, images and publications, please visit our [website](#).

DATA IMAGES

GTX79436 IHC-P Image

IHC-P analysis of human sarcomas tissue using GTX79436 Vimentin antibody [SP20] (ready-to-use).



For full product information, images and publications, please visit our [website](https://www.genetex.com).