

CYP3A7 antibody [F19 P2 H2]

Cat. No. GTX79463

Host	Mouse
Clonality	Monoclonal
Isotype	IgG1
Applications	WB, IHC-P, FCM, ELISA, IHC
Reactivity	Human, Bovine

Package
100 µl

Applications

Application Note

*Optimal dilutions/concentrations should be determined by the researcher.

Suggested dilution	Recommended dilution
WB	1:250
IHC-P	1:100-1:500
FCM	2µg per 10 ⁶ cells
ELISA	Assay dependent
IHC	Assay dependent

Not tested in other applications.

Calculated MW 57 kDa. ([Note](#))

Properties

Form	Liquid
Buffer	Ascites
Preservative	0.05% Sodium azide
Storage	Store as concentrated solution. Centrifuge briefly prior to opening vial. For short-term storage (1-2 weeks), store at 4°C. For long-term storage, aliquot and store at -20°C or below. Avoid multiple freeze-thaw cycles.
Immunogen	Synthetic peptide corresponding to residues E S R D E T V S G A, conjugated to ovalbumin.
Purification	Unpurified
Conjugation	Unconjugated

Note

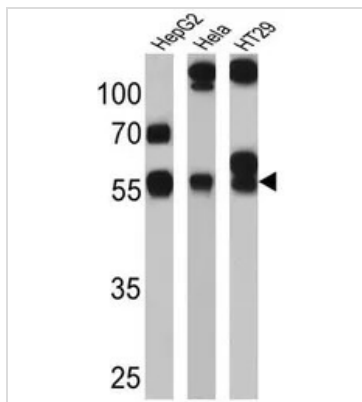
For laboratory research use only. Not for any clinical, therapeutic, or diagnostic use in humans or animals. Not for animal or human consumption.

Purchasers shall not, and agree not to enable third parties to, analyze, copy, reverse engineer or otherwise attempt to determine the structure or sequence of the product.



For full product information, images and publications, please visit our [website](#).

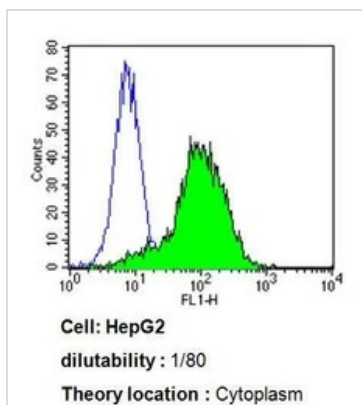
DATA IMAGES



GTX79463 WB Image

WB analysis of 25 ug of HepG2 (lane 1), HeLa (lane 2) and HT29 (lane 3) cell lysates using GTX79463 CYP3A7 antibody [F19 P2 H2].

Dilution : 1:1000

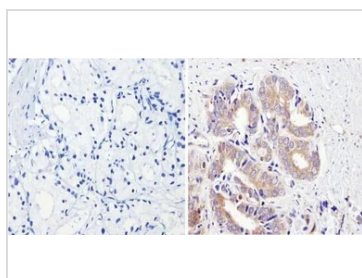


GTX79463 FCM Image

FACS analysis of HepG2 cells using GTX79463 CYP3A7 antibody [F19 P2 H2] compared to an isotype control (blue).

Dilution : 1:80 for 60 min at room temperature

Fixation : 2% paraformaldehyde



GTX79463 IHC-P Image

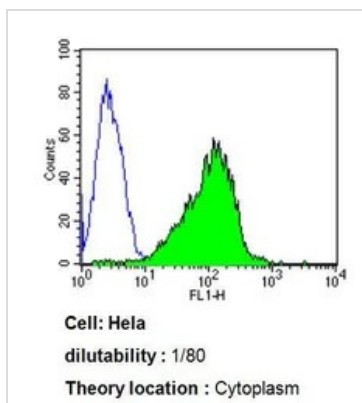
IHC-P analysis of human prostate carcinoma tissue using GTX79463 CYP3A7 antibody [F19 P2 H2].

Right : Primary antibody

Left : Negative control without primary antibody

Antigen retrieval : 10mM sodium citrate (pH 6.0) microwaved for 8-15 min

Dilution : 1:200



GTX79463 FCM Image

FACS analysis of HeLa cells using GTX79463 CYP3A7 antibody [F19 P2 H2] compared to an isotype control (blue).

Dilution : 0.5 ug/test incubated for 30 min at 4°C

Fixation : 2% paraformaldehyde



For full product information, images and publications, please visit our [website](#).