

Mist1 antibody [6E8/A12/C11P1]

Cat. No. GTX79479

Host	Mouse
Clonality	Monoclonal
Isotype	IgG
Applications	WB, IHC-P, IHC-Fr
Reactivity	Human, Mouse

Package
100 µg

Applications

Application Note

*Optimal dilutions/concentrations should be determined by the researcher.

Suggested dilution	Recommended dilution
WB	1:100-1:500
IHC-P	Assay dependent
IHC-Fr	Assay dependent

Not tested in other applications.

Calculated MW 21 kDa. ([Note](#))

Properties

Form	Liquid
Buffer	PBS, 0.1% BSA
Preservative	0.05% Sodium azide
Storage	Store as concentrated solution. Centrifuge briefly prior to opening vial. For short-term storage (1-2 weeks), store at 4°C. For long-term storage, aliquot and store at -20°C or below. Avoid multiple freeze-thaw cycles.
Concentration	1 mg/ml (Please refer to the vial label for the specific concentration.)
Immunogen	Mouse Mist1, C-terminus residues 175-197.
Purification	Protein A purified
Conjugation	Unconjugated

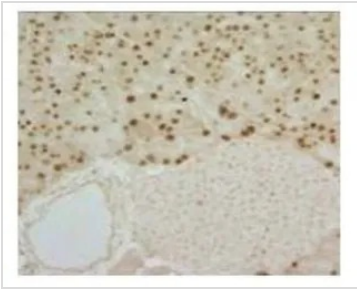
Note

For laboratory research use only. Not for any clinical, therapeutic, or diagnostic use in humans or animals. Not for animal or human consumption.

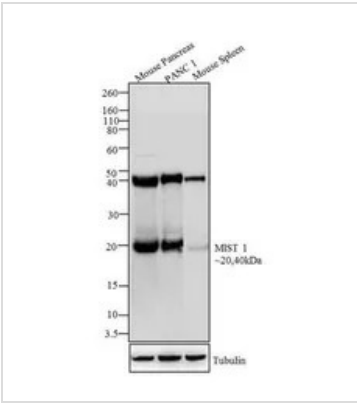
Purchasers shall not, and agree not to enable third parties to, analyze, copy, reverse engineer or otherwise attempt to determine the structure or sequence of the product.



For full product information, images and publications, please visit our [website](#).

DATA IMAGES

GTX79479 IHC-P Image

IHC-P analysis of mouse pancreas tissue using GTX79479 Mist1 antibody [6E8/A12/C11P1].


GTX79479 WB Image

WB analysis of whole cell extracts (30 µg lysate) of Mouse Pancreas (Lane 1), Panc1 (Lane 2) and Mouse spleen (Lane 3) using GTX79479 Mist1 antibody [6E8/A12/C11P1].

Dilution : 1:100-1:500



For full product information, images and publications, please visit our [website](#).