

## IL5 antibody [5A10]

Cat. No. GTX79485

Host	Rat
Clonality	Monoclonal
Isotype	IgG2a
Applications	WB, ELISA, Sandwich ELISA
Reactivity	Human, Mouse

Package  
500 µg

## Applications

## Application Note

\*Optimal dilutions/concentrations should be determined by the researcher.

Suggested dilution	Recommended dilution
WB	Assay dependent
ELISA	Assay dependent
Sandwich ELISA	Assay dependent

**Note : Capture : GTX79485, Detection : GTX79486**

Not tested in other applications.

**Calculated MW** 15 kDa. ( [Note](#) )

## Properties

Form	Liquid
Buffer	PBS
Preservative	No preservatives
Storage	Store as concentrated solution. Centrifuge briefly prior to opening vial. For short-term storage (1-2 weeks), store at 4°C. For long-term storage, aliquot and store at -20°C or below. Avoid multiple freeze-thaw cycles.
Concentration	1.01 mg/ml (Please refer to the vial label for the specific concentration.)
Immunogen	Recombinant human IL-5
Purification	Caprylic acid precipitation
Conjugation	Unconjugated

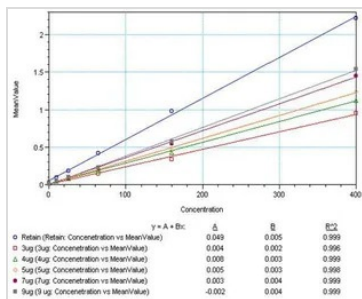
## Note

For laboratory research use only. Not for any clinical, therapeutic, or diagnostic use in humans or animals. Not for animal or human consumption.

Purchasers shall not, and agree not to enable third parties to, analyze, copy, reverse engineer or otherwise attempt to determine the structure or sequence of the product.



For full product information, images and publications, please visit our [website](#).

**DATA IMAGES**

**GTX79485 ELISA Image**

Sandwich ELISA analysis of serial diluted mouse IL-5 recombinant protein using IL5 antibody

Coating : GTX79485 IL5 antibody [5A10] in duplicate at 1, 2, 4, 5, 7, and 9 µg/mL

Detection : GTX79486 IL5 antibody [39D10] (Biotin) (0.5 µg/mL)



For full product information, images and publications, please visit our [website](https://www.genetex.com).