

PSMD2 antibody

Cat. No. GTX79499

Host	Rabbit
Clonality	Polyclonal
Isotype	IgG
Applications	WB, ICC/IF
Reactivity	Human, Mouse, Rat, Dog, Hamster, Monkey, Primate

Package
100 µl

Applications

Application Note

*Optimal dilutions/concentrations should be determined by the researcher.

Suggested dilution	Recommended dilution
WB	1:500-1:2,000
ICC/IF	1:250

Not tested in other applications.

Calculated MW 100 kDa. ([Note](#))

Product Note

This antibody detects ~42, 46, 48, and 52 kDa proteins which correspond to subunit 10B and probably the combined signal from 4, 6B, 7, and 8 subunit proteins.

Properties

Form	Liquid
Buffer	PBS
Preservative	0.05% Sodium azide
Storage	Store as concentrated solution. Centrifuge briefly prior to opening vial. For short-term storage (1-2 weeks), store at 4°C. For long-term storage, aliquot and store at -20°C or below. Avoid multiple freeze-thaw cycles.
Concentration	Batch dependent (Please refer to the vial label for the specific concentration.)
Immunogen	Synthetic Peptide: C A(278) T N R P D T L D P A L L R P G R(294)
Purification	Ammonium sulfate precipitation
Conjugation	Unconjugated

Note

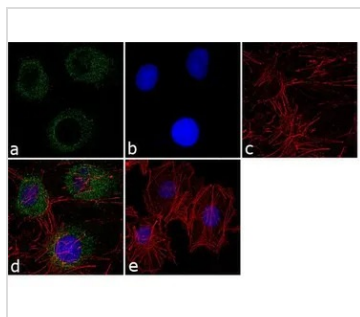
For laboratory research use only. Not for any clinical, therapeutic, or diagnostic use in humans or animals. Not for animal or human consumption.

Purchasers shall not, and agree not to enable third parties to, analyze, copy, reverse engineer or otherwise attempt to determine the structure or sequence of the product.



For full product information, images and publications, please visit our [website](#).

DATA IMAGES



GTXT79499 ICC/IF Image

ICC/IF analysis of HepG2 cells using GTXT79499 PSMD2 antibody. Panel e is a no primary antibody control.

Green : Primary antibody

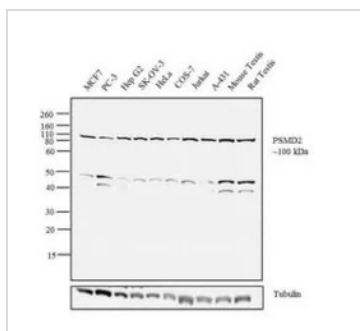
Blue : Nuclei

Red : Actin

Fixation : 4% paraformaldehyde

Permeabilization : 0.1% Triton X-100 for 10 minute

Dilution : 1:250 dilution in 0.1% BSA and incubated for 3 hours at room temperature



GTXT79499 WB Image

WB analysis of MCF7 (Lane 1), PC-3 (Lane 2), Hep G2 (Lane 3), SK-OV-3 (Lane 4), HeLa (Lane 5), COS-7 (Lane 6), Jurkat (Lane 7), A-431 (Lane 8), tissue extracts of mouse testis (Lane 9) and rat testis (Lane 10) using GTXT79499 PSMD2 antibody.

Dilution : 1:1000



For full product information, images and publications, please visit our [website](https://www.genetex.com).