

tPA antibody

Cat. No. GTX79623

Host	Rabbit
Clonality	Polyclonal
Isotype	IgG
Applications	WB, IHC-Fr, IP, ELISA
Reactivity	Mouse, Rat

Package
500 µg

Applications

Application Note

*Optimal dilutions/concentrations should be determined by the researcher.

Suggested dilution	Recommended dilution
WB	Assay dependent
IHC-Fr	Assay dependent
IP	Assay dependent
ELISA	Assay dependent

Not tested in other applications.

Calculated MW 63 kDa. ([Note](#))

Properties

Form	Liquid
Buffer	50mM Sodium Phosphate, 100mM NaCl, 1mM EDTA
Preservative	No preservatives
Storage	Store as concentrated solution. Centrifuge briefly prior to opening vial. For short-term storage (1-2 weeks), store at 4°C. For long-term storage, aliquot and store at -20°C or below. Avoid multiple freeze-thaw cycles.
Concentration	10 mg/ml (Please refer to the vial label for the specific concentration.)
Immunogen	Recombinant full length wild-type mouse protein (Glycosylated).
Purification	Protein A purified From serum
Conjugation	Unconjugated



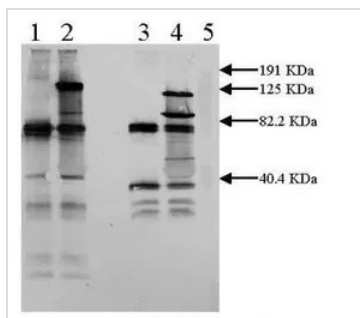
For full product information, images and publications, please visit our [website](#).

For laboratory research use only. Not for any clinical, therapeutic, or diagnostic use in humans or animals. Not for animal or human consumption.

Note

Purchasers shall not, and agree not to enable third parties to, analyze, copy, reverse engineer or otherwise attempt to determine the structure or sequence of the product.

DATA IMAGES



GTx79623 WB Image

WB analysis of various sample lysates using GTx79623 tPA antibody.

Lane 1 : Mouse TPA (0.5 µg) Non-reduced

Lane 2 : Mouse TPA (0.5 µg) + CPAI G (3µg) Non-reduced

Lane 3 : Mouse TPA (0.5 µg) Reduced

Lane 4 : Mouse TPA (0.5 µg) + CPAI (3 µg) Reduced

Lane 5 : Prestained Standard

Dilution : 2 µg/ml



For full product information, images and publications, please visit our [website](https://www.genetex.com).