

## Vimentin antibody [VI-RE/1] (PE)

Cat. No. GTX79851

Host	Mouse
Clonality	Monoclonal
Isotype	IgG1
Application	ICC/IF, FACS
Reactivity	Human, Rabbit

Reference ( 3 )

Package

100 µg

## APPLICATION

## Application Note

\*Optimal dilutions/concentrations should be determined by the researcher.

Suggested dilution	Recommended dilution
ICC/IF	Assay dependent
FACS	Assay dependent

Not tested in other applications.

**Calculated MW** 54 kDa. ( [Note](#) )

**Product Note** We do not recommend use of this product for Mouse,Pig samples.

## PROPERTIES

Form	Liquid
Buffer	PBS
Preservative	15mM Sodium azide
Storage	Store as concentrated solution. Centrifuge briefly prior to opening vial. Store at 4°C. DO NOT FREEZE. Protect from light.
Concentration	0.1 mg/ml (Please refer to the vial label for the specific concentration.)
Immunogen	Bacterially expressed full-length human vimentin
Purification	Purified by size-exclusion chromatography
Conjugation	Phycoerythrin (PE)

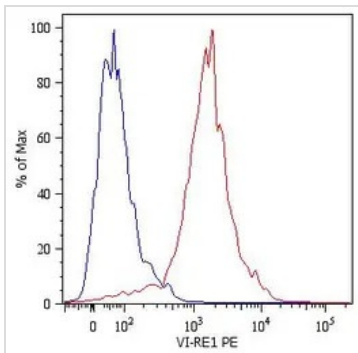
## Note

For laboratory research use only. Not for any clinical, therapeutic, or diagnostic use in humans or animals. Not for animal or human consumption.

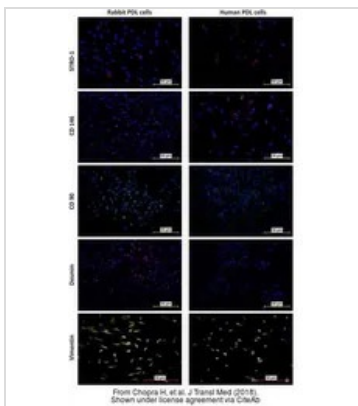
Purchasers shall not, and agree not to enable third parties to, analyze, copy, reverse engineer or otherwise attempt to determine the structure or sequence of the product.



For full product information, images and publications, please visit our [website](#).

**DATA IMAGES**

**GTX79851 FACS Image**

FACS (intracellular staining) analysis of LEP-19 cells using GTX79851 Vimentin antibody [VI-RE/1] (PE).


**GTX79851 ICC/IF Image**

The data was published in the journal J Transl Med in 2018. [PMID: 29929550](https://pubmed.ncbi.nlm.nih.gov/29929550/)



For full product information, images and publications, please visit our [website](https://www.genetex.com).