

## Ubinuclein 1 antibody [UBN1-02]

Cat. No. GTX79859

Host	Mouse
Clonality	Monoclonal
Isotype	IgG
Applications	WB, IP
Reactivity	Human

Package  
100 µg

## Applications

## Application Note

\*Optimal dilutions/concentrations should be determined by the researcher.

Suggested dilution	Recommended dilution
WB	Assay dependent
IP	Assay dependent

Not tested in other applications.

**Calculated MW** 122 kDa. ([Note](#))**Product Note** This antibody recognizes N-terminal part of ubinuclein 1 (UBN1).

## Properties

Form	Liquid
Buffer	PBS
Preservative	15mM Sodium azide
Storage	Store as concentrated solution. Centrifuge briefly prior to opening vial. Store at 4°C. DO NOT FREEZE.
Concentration	1 mg/ml (Please refer to the vial label for the specific concentration.)
Immunogen	Recombinant protein corresponding to amino acids 1-190 of ubinuclein 1.
Purification	Protein A purified
Conjugation	Unconjugated

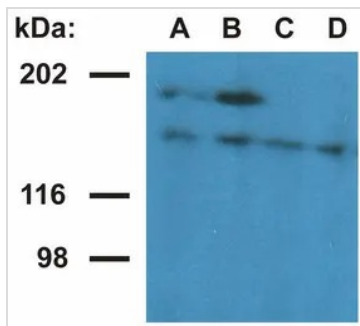
## Note

For laboratory research use only. Not for any clinical, therapeutic, or diagnostic use in humans or animals. Not for animal or human consumption.

Purchasers shall not, and agree not to enable third parties to, analyze, copy, reverse engineer or otherwise attempt to determine the structure or sequence of the product.



For full product information, images and publications, please visit our [website](#).

**DATA IMAGES**

**GTX79859 WB Image**

WB analysis of nuclear fraction of HeLa cells using GTX79859 Ubinuclein 1 antibody [UBN1-02].

Lane A, B : The monoclonal antibody UBN1-01

Lane C, D : GTX79859

Diultion : 1µg/ml (lane A and C) and 5µg/ml (lane B and D)



For full product information, images and publications, please visit our [website](https://www.genetex.com).