

## gamma Tubulin antibody [TU-32]

Cat. No. GTX79860

|             |   |
|-------------|---|
| Host        | Mouse                                   |
| Clonality   | Monoclonal                              |
| Isotype     | IgG1                                    |
| Application | WB, ICC/IF                              |
| Reactivity  | Human, Mouse, Rat, Pig, Protozoa, Plant |

Package  
100 µg

## APPLICATION

## Application Note

\*Optimal dilutions/concentrations should be determined by the researcher.

| Suggested dilution | Recommended dilution |
|--------------------|----------------------|
| WB                 | Assay dependent      |
| ICC/IF             | Assay dependent      |

Not tested in other applications.

Calculated MW 51 kDa. ( [Note](#) )

## Product Note

This antibody recognizes C-terminus (amino acids 434-449 in human) of gamma-tubulin. The epitope was located in the aminoacid sequence PDYISW (aa441-446 in human), which is identical for gamma-tubulin 1 and gamma-tubulin 2.

## PROPERTIES

|               |  |
|---------------|--|
| Form          | Liquid   |
| Buffer        | PBS  |
| Preservative  | 15mM Sodium azide  |
| Storage       | Store as concentrated solution. Centrifuge briefly prior to opening vial. Store at 4°C. DO NOT FREEZE. |
| Concentration | 1 mg/ml (Please refer to the vial label for the specific concentration.)                               |
| Immunogen     | human gamma-tubulin peptide EYHAATRPDYISWGTQ, amino acids 434-449                                      |
| Purification  | Protein A purified   |
| Conjugation   | Unconjugated   |

## Note

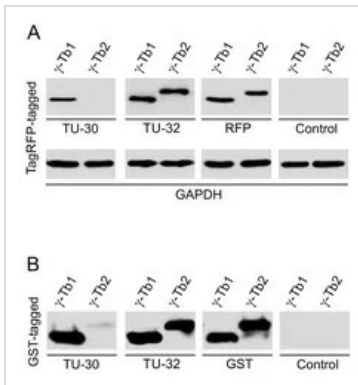
For laboratory research use only. Not for any clinical, therapeutic, or diagnostic use in humans or animals. Not for animal or human consumption.

Purchasers shall not, and agree not to enable third parties to, analyze, copy, reverse engineer or otherwise attempt to determine the structure or sequence of the product.



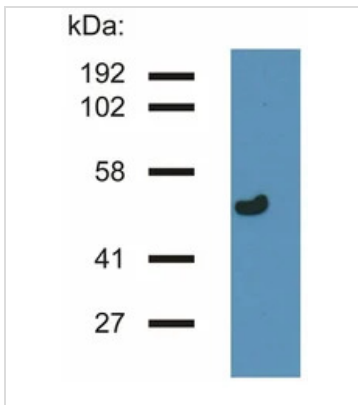
For full product information, images and publications, please visit our [website](#).

DATA IMAGES



**GTX79860 WB Image**

WB analysis of SH-SY5Y cells overexpressing TagRFP-tagged or GST-tagged human  $\gamma$ -tubulin 1 ( $\gamma$ -Tb1) or  $\gamma$ -tubulin 2 ( $\gamma$ -Tb2) using GTX79860 gamma Tubulin antibody [TU-32].



**GTX79860 WB Image**

WB analysis of pig brain tissue lysate using GTX79860 gamma Tubulin antibody [TU-32].



For full product information, images and publications, please visit our [website](https://www.genetex.com).