

gamma Tubulin antibody [TU-30]

Cat. No. GTX79861

Host	Mouse
Clonality	Monoclonal
Isotype	IgG1
Applications	WB, ICC/IF
Reactivity	Human, Mouse, Rat, Bovine, Chicken, Pig, Protozoa, Plant

References (1)

Package

100 µg

Applications

Application Note

*Optimal dilutions/concentrations should be determined by the researcher.

Suggested dilution	Recommended dilution
WB	Assay dependent
ICC/IF	Assay dependent

Not tested in other applications.

Calculated MW 51 kDa. ([Note](#))**Product Note**

This antibody recognizes C-terminus (amino acids 434-449 in human) of gamma-tubulin. The epitope was located in the amino acid sequence TRPDYI (aa439-444 in human), which is present on human gamma-tubulin 1 but not on human gamma-tubulin 2.

Properties

Form	Liquid
Buffer	PBS
Preservative	15mM Sodium azide
Storage	Store as concentrated solution. Centrifuge briefly prior to opening vial. Store at 4°C. DO NOT FREEZE.
Concentration	1 mg/ml (Please refer to the vial label for the specific concentration.)
Immunogen	C-terminal peptide of gamma-tubulin conjugated to KLH.
Purification	Protein A purified
Conjugation	Unconjugated

Note

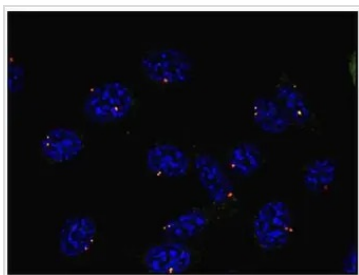
For laboratory research use only. Not for any clinical, therapeutic, or diagnostic use in humans or animals. Not for animal or human consumption.

Purchasers shall not, and agree not to enable third parties to, analyze, copy, reverse engineer or otherwise attempt to determine the structure or sequence of the product.



For full product information, images and publications, please visit our [website](#).

DATA IMAGES

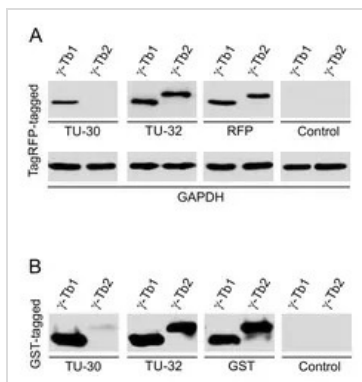


GTX79861 ICC/IF Image

ICC/IF analysis of mouse fibroblasts using GTX79861 gamma Tubulin antibody [TU-30].

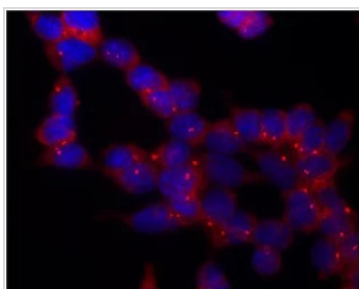
Red : Primary antibody

Blue : DAPI



GTX79861 WB Image

WB analysis of SH-SY5Y cells overexpressing TagRFP-tagged or GST-tagged human γ -tubulin 1 (γ -Tb1) or γ -tubulin 2 (γ -Tb2) using GTX79861 gamma Tubulin antibody [TU-30].

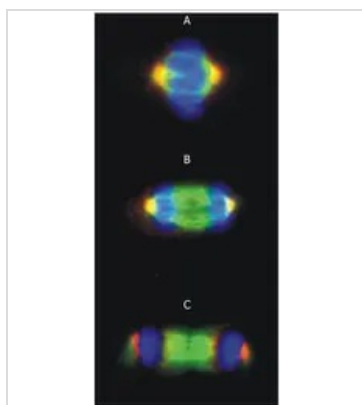


GTX79861 ICC/IF Image

ICC/IF analysis of P19X1 cells using GTX79861 gamma Tubulin antibody [TU-30].

Red : Primary antibody

Blue : DAPI



GTX79861 ICC/IF Image

ICC/IF analysis of 3T3 cells (Panel A : metaphase ; Panel B : anaphase ; Panel C : telophase) using GTX79861 gamma Tubulin antibody [TU-30].

Green : alpha Tubulin antibody

Red : Primary antibody

Blue : DAPI



For full product information, images and publications, please visit our [website](#).