

alpha Tubulin antibody [TU-01] (Biotin)

Cat. No. GTX79871

Host	Mouse
Clonality	Monoclonal
Isotype	IgG1
Applications	WB, ICC/IF, IHC-P
Reactivity	Human, Mouse, Rat, Pig

References (1)

Package

100 µg

Applications

Application Note

*Optimal dilutions/concentrations should be determined by the researcher.

Suggested dilution	Recommended dilution
WB	Assay dependent
ICC/IF	Assay dependent
IHC-P	Assay dependent

Not tested in other applications.

Product Note This antibody recognizes the defined epitope (aa 65-97) on N-terminal structural domain of alpha-tubulin.

Properties

Form	Liquid
Buffer	PBS
Preservative	15mM Sodium azide
Storage	Store as concentrated solution. Centrifuge briefly prior to opening vial. Store at 4°C. DO NOT FREEZE.
Concentration	1 mg/ml (Please refer to the vial label for the specific concentration.)
Immunogen	Fraction of tubulin purified from porcine brain by two cycles of polymerization - depolymerization.
Purification	Purified IgG
Conjugation	Biotin The reagent is free of unconjugated biotin.

Note

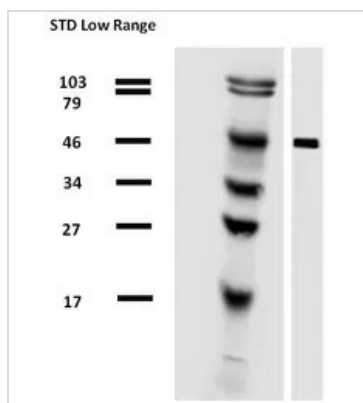
For laboratory research use only. Not for any clinical, therapeutic, or diagnostic use in humans or animals. Not for animal or human consumption.

Purchasers shall not, and agree not to enable third parties to, analyze, copy, reverse engineer or otherwise attempt to determine the structure or sequence of the product.



For full product information, images and publications, please visit our [website](#).

DATA IMAGES



GTx79871 WB Image

WB analysis of pig brain tissue lysate using GTx79871 alpha Tubulin antibody [TU-01] (Biotin).



For full product information, images and publications, please visit our [website](https://www.genetex.com).