

SOS1 antibody [SOS-01]

Cat. No. GTX79891

Host	Mouse
Clonality	Monoclonal
Isotype	IgG1
Applications	WB, ICC/IF
Reactivity	Human, Mouse

Package
100 µg

Applications

Application Note

*Optimal dilutions/concentrations should be determined by the researcher.

Suggested dilution	Recommended dilution
WB	Assay dependent
ICC/IF	Assay dependent

Not tested in other applications.

Calculated MW 152 kDa. ([Note](#))

Properties

Form	Liquid
Buffer	PBS
Preservative	15mM Sodium azide
Storage	Store as concentrated solution. Centrifuge briefly prior to opening vial. Store at 4°C. DO NOT FREEZE.
Concentration	1 mg/ml (Please refer to the vial label for the specific concentration.)
Immunogen	Peptide corresponding to amino acids THPSMHRDGPPLLENAHSS of human Sos protein.
Purification	Protein A purified
Conjugation	Unconjugated

Note

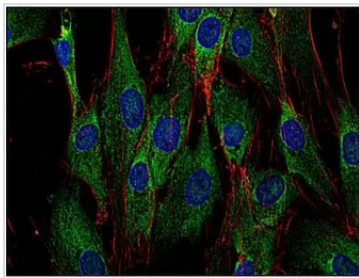
For laboratory research use only. Not for any clinical, therapeutic, or diagnostic use in humans or animals. Not for animal or human consumption.

Purchasers shall not, and agree not to enable third parties to, analyze, copy, reverse engineer or otherwise attempt to determine the structure or sequence of the product.



For full product information, images and publications, please visit our [website](#).

DATA IMAGES



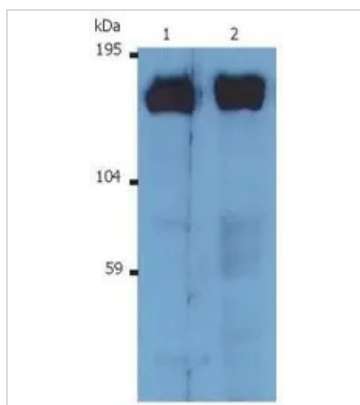
GTx79891 ICC/IF Image

ICC/IF analysis of human primary fibroblasts using GTx79891 SOS1 antibody [SOS-01].

Green : Primary antibody

Red : Actin

Blue : DAPI

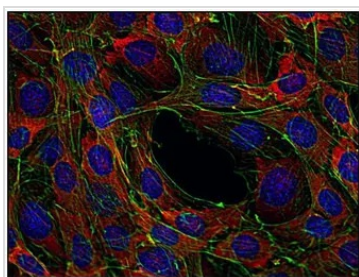


GTx79891 WB Image

WB analysis of various samples using GTx79891 SOS1 antibody [SOS-01].

Lane 1 : K562

Lane 2 : Raji



GTx79891 ICC/IF Image

ICC/IF analysis of mouse transformed fibroblasts using GTx79891 SOS1 antibody [SOS-01].

Green : Actin

Red : Primary antibody

Blue : DAPI



For full product information, images and publications, please visit our [website](https://www.genetex.com).