

## SHIP1 antibody [SHIP-02]

Cat. No. GTX79893

<b>Host</b>	Mouse
<b>Clonality</b>	Monoclonal
<b>Isotype</b>	IgG2a
<b>Applications</b>	WB, ICC/IF, FCM
<b>Reactivity</b>	Human

★★★★★ Review ( 2 )

Package  
100 µg

## Applications

## Application Note

\*Optimal dilutions/concentrations should be determined by the researcher.

Suggested dilution	Recommended dilution
WB	Assay dependent
ICC/IF	Assay dependent
FCM	Assay dependent

Not tested in other applications.

Calculated MW 133 kDa. ( [Note](#) )

## Properties

<b>Form</b>	Liquid
<b>Buffer</b>	PBS
<b>Preservative</b>	15mM Sodium azide
<b>Storage</b>	Store as concentrated solution. Centrifuge briefly prior to opening vial. Store at 4°C. DO NOT FREEZE.
<b>Concentration</b>	1 mg/ml (Please refer to the vial label for the specific concentration.)
<b>Immunogen</b>	Peptide corresponding to a sequence within N-terminal domain of Human SHIP-1.
<b>Purification</b>	Protein A purified
<b>Conjugation</b>	Unconjugated

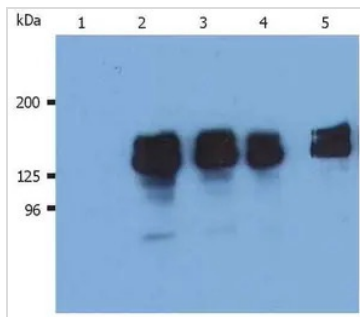
## Note

For laboratory research use only. Not for any clinical, therapeutic, or diagnostic use in humans or animals. Not for animal or human consumption.

Purchasers shall not, and agree not to enable third parties to, analyze, copy, reverse engineer or otherwise attempt to determine the structure or sequence of the product.

For full product information, images and publications, please visit our [website](#).

## DATA IMAGES



### GTX79893 WB Image

WB analysis of THP-1 cells using GTX79893 SHIP1 antibody [SHIP-02].

Lane 1 : mouse IgG1 isotype control

Lane 2,3 : GTX79894

Lane 4,5 : GTX79893



For full product information, images and publications, please visit our [website](#).