

SHIP1 antibody [SHIP-01]

Cat. No. GTX79894

Host	Mouse
Clonality	Monoclonal
Isotype	IgG2a
Applications	WB, FCM
Reactivity	Human

Package
100 µg

Applications

Application Note

*Optimal dilutions/concentrations should be determined by the researcher.

Suggested dilution	Recommended dilution
WB	Assay dependent
FCM	Assay dependent

Not tested in other applications.

Calculated MW 133 kDa. ([Note](#))

Properties

Form	Liquid
Buffer	PBS
Preservative	15mM Sodium azide
Storage	Store as concentrated solution. Centrifuge briefly prior to opening vial. Store at 4°C. DO NOT FREEZE.
Concentration	1 mg/ml (Please refer to the vial label for the specific concentration.)
Immunogen	Peptide corresponding to a sequence within N-terminal domain of Human SHIP-1.
Purification	Protein A purified
Conjugation	Unconjugated

Note

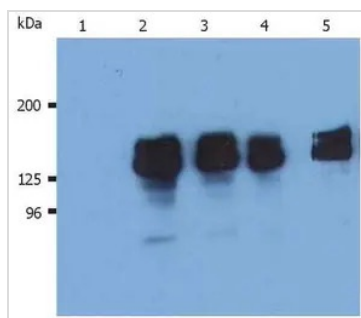
For laboratory research use only. Not for any clinical, therapeutic, or diagnostic use in humans or animals. Not for animal or human consumption.

Purchasers shall not, and agree not to enable third parties to, analyze, copy, reverse engineer or otherwise attempt to determine the structure or sequence of the product.



For full product information, images and publications, please visit our [website](#).

DATA IMAGES



GTX79894 WB Image

WB analysis of THP-1 cells using GTX79894 SHIP1 antibody [SHIP-01].

Lane 1 : mouse IgG1 isotype control

Lane 2,3 : GTX79894

Lane 4,5 : GTX79893



For full product information, images and publications, please visit our [website](#).