

Ly6g antibody [RB6-8C5] (FITC)

Cat. No. GTX79898

Host	Rat
Clonality	Monoclonal
Isotype	IgG2b
Applications	IHC-P, FCM
Reactivity	Mouse

References (13)

Package

100 µg

PRODUCT

Summary

The RB6-8C5 antibody binds to mouse Ly-6G, commonly known as Gr-1, a member of the Ly-6 superfamily of GPI-anchored cell surface proteins with roles in cell signaling and cell adhesion. Gr-1 is differentially expressed during development and maturation of cells in the myeloid lineage and is expression at varying stages and levels on monocytes, macrophages, granulocytes, and peripheral neutrophils. In the mouse, the RB6-8C5 antibody is typically used in combination with the macrophage labeling antibody M1/70 (Anti-CD11b) for phenotypic analysis of monocytes, macrophages and granulocytes.

Applications

Application Note

*Optimal dilutions/concentrations should be determined by the researcher.

Suggested dilution	Recommended dilution
IHC-P	Assay dependent
FCM	Assay dependent

Not tested in other applications.

Product Note

The rat monoclonal antibody RB6-8C5 detects Ly6G component of Gr-1 antigen.

Properties

Form	Liquid
Buffer	10mM NaH ₂ PO ₄ , 150mM NaCl, 0.1% Gelatin
Preservative	0.09% Sodium azide
Storage	Store as concentrated solution. Centrifuge briefly prior to opening vial. Store at 4°C. DO NOT FREEZE. Protect from light.
Concentration	0.5 mg/ml (Please refer to the vial label for the specific concentration.)
Immunogen	Murine granulocytes
Purification	Purified by affinity chromatography From tissue culture supernatant
Conjugation	Fluorescein isothiocyanate (FITC) Wavelength



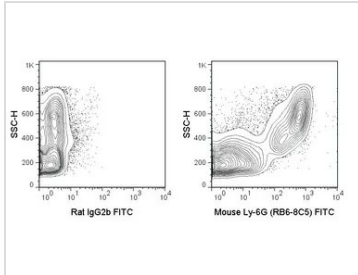
For full product information, images and publications, please visit our [website](#).

Date 2025 / 07 / 13 Page 1 of 2

For laboratory research use only. Not for any clinical, therapeutic, or diagnostic use in humans or animals. Not for animal or human consumption.

Note

Purchasers shall not, and agree not to enable third parties to, analyze, copy, reverse engineer or otherwise attempt to determine the structure or sequence of the product.

DATA IMAGES

GTX79898 FCM Image

FACS analysis of C57Bl/6 bone marrow cells stained FITC anti-mouse Ly-6G antibody, followed by staining with GTX79898 Ly6g antibody [RB6-8C5] (FITC).

Right panel : Co-stained with FITC anti-mouse Ly-6G antibody and GTX79898

Left panel : Co-stained with FITC anti-mouse Ly-6G antibody and FITC rat IgG2b isotype control

Antibody amount : 0.5 µg



For full product information, images and publications, please visit our [website](https://www.genetex.com).