

CD3 antibody [OKT3] (PerCP-Cy5.5)

Cat. No. GTX79906-11

Host	Mouse
Clonality	Monoclonal
Isotype	IgG2a
Applications	FCM
Reactivity	Human, Chimpanzee

References (11)

Package

100 test

PRODUCT

Summary

The OKT3 antibody is specific for human CD3e, also known as CD3 epsilon, a 20 kDa subunit of the T cell receptor complex along with CD3 gamma and CD3 delta. These integral membrane protein chains assemble with additional chains of the T cell receptor (TCR), as well as CD3 zeta chain, to form the T cell receptor – CD3 complex. Together with co-receptors CD4 or CD8, the complex serves to recognize antigens bound to MHC molecules on antigen-presenting cells. These interactions promote T cell receptor signaling (T cell activation), inducing a number of cellular responses including proliferation, differentiation, production of cytokines or activation-induced cell death. CD3 is differentially expressed during thymocyte-to-T cell development and on all mature T cells.

Applications

Application Note

*Optimal dilutions/concentrations should be determined by the researcher.

Suggested dilution

Recommended dilution

FCM

0.25 µg (5 µl) for 10⁵-10⁸ cells in 100 µl sample per test

Not tested in other applications.

Product Note

This antibody recognizes the CD3 antigen of the TCR/CD3 complex on mature human T cells. This antibody, also known as Orthoclone OKT3 or Muromonab-CD3, has been extensively used as a drug for therapy of acute, glucocorticoid resistant rejection of allogenic renal, heart and liver transplants. It has also been investigated for use in treating T-cell acute lymphoblastic leukemia.

Properties

Form Liquid**Buffer** 10mM NaH₂PO₄, 150mM NaCl, 0.1% Gelatin**Preservative** 0.09% Sodium azide**Storage** Store as concentrated solution. Centrifuge briefly prior to opening vial. Store at 4°C. DO NOT FREEZE. Protect from light.**Concentration** 0.05 mg/ml (Please refer to the vial label for the specific concentration.)**Immunogen** Commercially sensitive information**Purification** Purified by affinity chromatography
From tissue culture supernatant

For full product information, images and publications, please visit our [website](#).

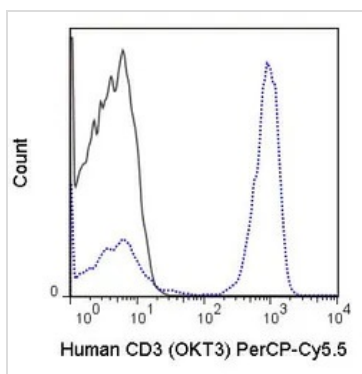
ConjugationPeridinin-chlorophyll proteins-Cyanine5.5 (PerCP-Cy5.5) [Wavelength](#)

For laboratory research use only. Not for any clinical, therapeutic, or diagnostic use in humans or animals. Not for animal or human consumption.

Note

Purchasers shall not, and agree not to enable third parties to, analyze, copy, reverse engineer or otherwise attempt to determine the structure or sequence of the product.

DATA IMAGES

**GTX79906-11 FCM Image**

FACS analysis of human peripheral blood lymphocytes using GTX79906-11 CD3 epsilon antibody [OKT3] (PerCP-Cy5.5).

Solid line : Primary antibody

Dashed line : PerCP-Cy5.5 mouse IgG2a isotype control

Antibody amount : 0.25 μ g



For full product information, images and publications, please visit our [website](#).