

ENPP3 antibody [NP4D6]

Cat. No. GTX79907

Host	Mouse
Clonality	Monoclonal
Isotype	IgG1
Applications	ICC/IF, FCM
Reactivity	Human

Package
100 µg

Applications

Application Note

*Optimal dilutions/concentrations should be determined by the researcher.

Suggested dilution	Recommended dilution
ICC/IF	Assay dependent
FCM	Assay dependent

Not tested in other applications.

Properties

Form	Liquid
Buffer	PBS
Preservative	15mM Sodium azide
Storage	Store as concentrated solution. Centrifuge briefly prior to opening vial. Store at 4°C. DO NOT FREEZE.
Concentration	1 mg/ml (Please refer to the vial label for the specific concentration.)
Immunogen	HEK-293 cells transfected with human CD203c
Purification	Protein A purified
Conjugation	Unconjugated

Note

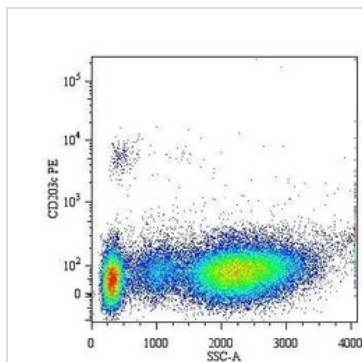
For laboratory research use only. Not for any clinical, therapeutic, or diagnostic use in humans or animals. Not for animal or human consumption.

Purchasers shall not, and agree not to enable third parties to, analyze, copy, reverse engineer or otherwise attempt to determine the structure or sequence of the product.



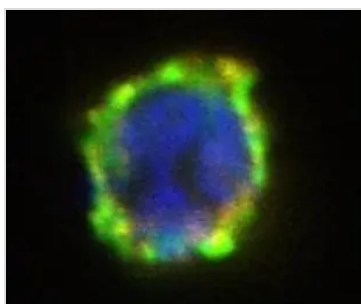
For full product information, images and publications, please visit our [website](#).

DATA IMAGES



GTx79907 FCM Image

Surface staining of human basophils in allergen-stimulated whole blood (CD203cpos/ SSClow) by anti-CD203c antibody (NP4D6) (GTx79907).



GTx79907 ICC/IF Image

Surface staining of activated human basophil by FITC-conjugated anti-CD63 (clone MEM-259, green) and PE-conjugated anti-CD203c (clone NP4D6, red); merged signal yellow. DNA visualized by DAPI (blue).



For full product information, images and publications, please visit our [website](#).