

## ENPP3 antibody [NP4D6] (PE)

Cat. No. GTX79908

Host	Mouse
Clonality	Monoclonal
Isotype	IgG1
Applications	ICC/IF, FCM
Reactivity	Human

Package  
100 test

## Applications

## Application Note

\*Optimal dilutions/concentrations should be determined by the researcher.

Suggested dilution	Recommended dilution
ICC/IF	Assay dependent
FCM	20 µl reagent / 100 µl of whole blood or 10 <sup>6</sup> cells in a suspension

Not tested in other applications.

## Properties

Form	Liquid
Buffer	PBS
Preservative	15mM Sodium azide
Storage	Store as concentrated solution. Centrifuge briefly prior to opening vial. Store at 4°C. DO NOT FREEZE. Protect from light.
Concentration	Batch dependent (Please refer to the vial label for the specific concentration.)
Immunogen	HEK-293 cells transfected with human CD203c
Purification	Purified by size-exclusion chromatography
Conjugation	Phycoerythrin (PE) <a href="#">Wavelength</a>

## Note

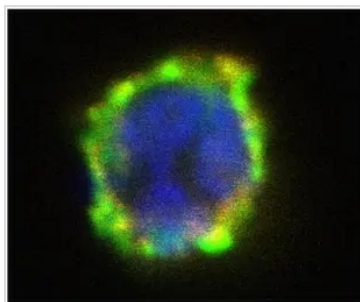
For laboratory research use only. Not for any clinical, therapeutic, or diagnostic use in humans or animals. Not for animal or human consumption.

Purchasers shall not, and agree not to enable third parties to, analyze, copy, reverse engineer or otherwise attempt to determine the structure or sequence of the product.



For full product information, images and publications, please visit our [website](#).

## DATA IMAGES



### GTX79908 ICC/IF Image

ICC/IF analysis of activated human basophil using GTX79908 ENPP3 antibody [NP4D6] (PE).

Green : CD63 antibody

Red : GTX79908

Blue : DAPI



For full product information, images and publications, please visit our [website](#).