

## MAP2 antibody [MT-08]

**Cat. No. GTX79911**

<b>Host</b>	Mouse
<b>Clonality</b>	Monoclonal
<b>Isotype</b>	IgG1
<b>Applications</b>	WB, ICC/IF, IHC-P, IHC-Fr, IP, ELISA
<b>Reactivity</b>	Human, Mouse, Pig

**Package**  
100 µg

## Applications

**Application Note**

\*Optimal dilutions/concentrations should be determined by the researcher.

Suggested dilution	Recommended dilution
WB	Assay dependent
ICC/IF	Assay dependent
IHC-P	Assay dependent
IHC-Fr	Assay dependent
IP	Assay dependent
ELISA	Assay dependent

Not tested in other applications.

**Product Note**

This antibody recognizes an epitope (aa 1375-1395) located in central domain of molecule Microtubule Associated Protein 2ab (MAP2ab).

## Properties

<b>Form</b>	Liquid
<b>Buffer</b>	PBS
<b>Preservative</b>	15mM Sodium azide
<b>Storage</b>	Store as concentrated solution. Centrifuge briefly prior to opening vial. Store at 4°C. DO NOT FREEZE.
<b>Concentration</b>	1 mg/ml (Please refer to the vial label for the specific concentration.)
<b>Immunogen</b>	Microtubule protein (bovine brain) enriched for kinesin
<b>Purification</b>	Protein A purified
<b>Conjugation</b>	Unconjugated



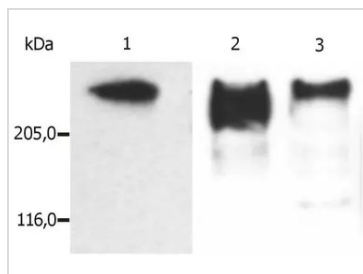
For full product information, images and publications, please visit our [website](#).

For laboratory research use only. Not for any clinical, therapeutic, or diagnostic use in humans or animals. Not for animal or human consumption.

**Note**

Purchasers shall not, and agree not to enable third parties to, analyze, copy, reverse engineer or otherwise attempt to determine the structure or sequence of the product.

## DATA IMAGES

**GTX79911 WB Image**

WB analysis of microtubules partially purified from pig brain lysate using GTX79911 MAP2 antibody [MT-08].

Lane 1 : GTX27756

Lane 2 : GTX79912

Lane 3 : GTX79911



For full product information, images and publications, please visit our [website](#).