

HLA-E antibody [MEM-E/07] (Biotin)

Cat. No. GTX79922

Host	Mouse
Clonality	Monoclonal
Isotype	IgG1
Applications	IHC-P, FCM, IP
Reactivity	Human

References (1)

Package

100 µg

Applications

Application Note

*Optimal dilutions/concentrations should be determined by the researcher.

Suggested dilution	Recommended dilution
IHC-P	Assay dependent
FCM	Assay dependent
IP	Assay dependent

Not tested in other applications.

Product Note

This antibody reacts with some classical MHC Class I molecules (MHC Class Ia): HLA-B7 (strongly), HLA-B8 (moderately), HLA-B27, -B44 (weakly).

Properties

Form	Liquid
Buffer	PBS
Preservative	15mM Sodium azide
Storage	Store as concentrated solution. Centrifuge briefly prior to opening vial. Store at 4°C. DO NOT FREEZE.
Concentration	1 mg/ml (Please refer to the vial label for the specific concentration.)
Immunogen	Bacterially expressed recombinant HLA-E refolded with beta2-microglobulin and peptide.
Purification	Purified IgG
Conjugation	Biotin The reagent is free of unconjugated biotin.

Note

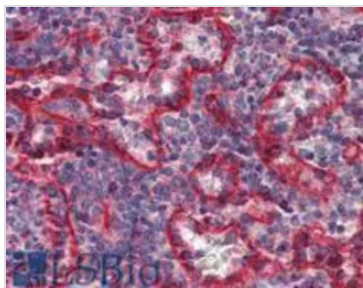
For laboratory research use only. Not for any clinical, therapeutic, or diagnostic use in humans or animals. Not for animal or human consumption.

Purchasers shall not, and agree not to enable third parties to, analyze, copy, reverse engineer or otherwise attempt to determine the structure or sequence of the product.



For full product information, images and publications, please visit our [website](#).

DATA IMAGES



GTX79922 IHC-P Image

Immunohistochemistry staining of human spleen (paraffin sections) with anti-HLA-E (clone MEM-E/07).



For full product information, images and publications, please visit our [website](#).