

## CD9 antibody [MEM-61] (APC)

Cat. No. GTX79930

Host	Mouse
Clonality	Monoclonal
Isotype	IgG1
Applications	FCM
Reactivity	Human

References ( 2 )  
Package  
100 test

## Applications

## Application Note

\*Optimal dilutions/concentrations should be determined by the researcher.

Suggested dilution	Recommended dilution
FCM	10 µl reagent / 100 µl of whole blood or 10 <sup>6</sup> cells in a suspension

Not tested in other applications.

**Product Note** This antibody recognizes an epitope on second extracellular domain (EC2) of CD9 antigen.

## Properties

Form	Liquid
Buffer	PBS
Preservative	15mM Sodium azide
Storage	Store as concentrated solution. Centrifuge briefly prior to opening vial. Store at 4°C. DO NOT FREEZE. Protect from light.
Concentration	Batch dependent (Please refer to the vial label for the specific concentration.)
Immunogen	Pre-B cell line NALM-6.
Purification	Purified by size-exclusion chromatography
Conjugation	Allophycocyanin (APC) <a href="#">Wavelength</a>

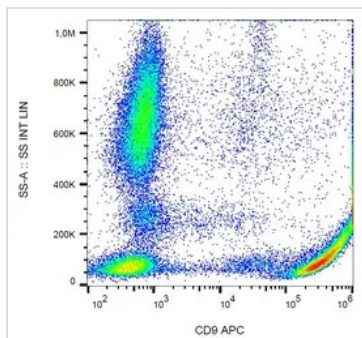
## Note

For laboratory research use only. Not for any clinical, therapeutic, or diagnostic use in humans or animals. Not for animal or human consumption.

Purchasers shall not, and agree not to enable third parties to, analyze, copy, reverse engineer or otherwise attempt to determine the structure or sequence of the product.



For full product information, images and publications, please visit our [website](#).

**DATA IMAGES**

**GTX79930 FCM Image**

FACS analysis of human peripheral blood using GTX79930 CD9 antibody [MEM-61] (APC).



For full product information, images and publications, please visit our [website](#).