

## CD18 antibody [MEM-48] (PE)

Cat. No. GTX79945

Host	Mouse
Clonality	Monoclonal
Isotype	IgG1
Applications	WB, IHC-P, FCM, Blocking
Reactivity	Human, Mouse

References ( 1 )  
Package  
100 test

## Applications

## Application Note

\*Optimal dilutions/concentrations should be determined by the researcher.

Suggested dilution	Recommended dilution
WB	Assay dependent
IHC-P	Assay dependent
FCM	20 µl reagent / 100 µl of whole blood or 10 <sup>6</sup> cells in a suspension
Blocking	Assay dependent

Not tested in other applications.

Calculated MW	85 kDa. ( <a href="#">Note</a> )
Product Note	This antibody recognizes an epitope involving residues 534-546 in cysteine-rich repeat 3 of the CD18 antigen (integrin beta2 subunit; beta2 integrin). We do not recommend use of this product for Dog samples.

## Properties

Form	Liquid
Buffer	PBS
Preservative	15mM Sodium azide
Storage	Store as concentrated solution. Centrifuge briefly prior to opening vial. Store at 4°C. DO NOT FREEZE. Protect from light.
Concentration	Batch dependent (Please refer to the vial label for the specific concentration.)
Immunogen	Leukocytes of a patient suffering from a LGL-type leukemia.
Purification	Purified by size-exclusion chromatography
Conjugation	Phycoerythrin (PE) <a href="#">Wavelength</a>

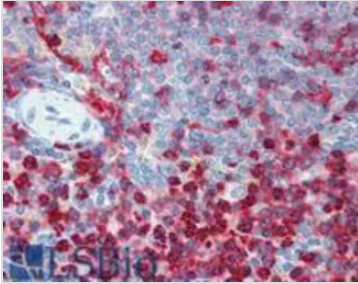


For full product information, images and publications, please visit our [website](#).

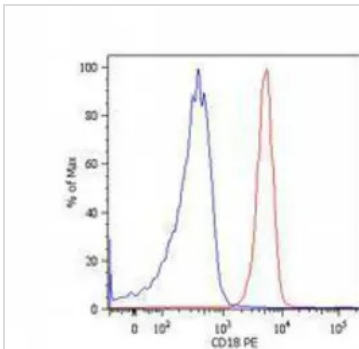
For laboratory research use only. Not for any clinical, therapeutic, or diagnostic use in humans or animals. Not for animal or human consumption.

**Note**

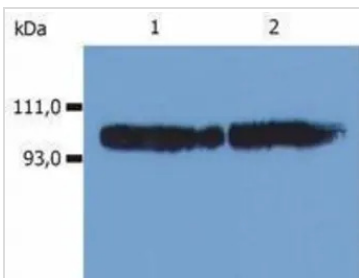
Purchasers shall not, and agree not to enable third parties to, analyze, copy, reverse engineer or otherwise attempt to determine the structure or sequence of the product.

**DATA IMAGES**

**GTx79945 IHC-P Image**

Immunohistochemistry staining of human spleen (paraffin sections) using anti-CD18 (MEM-48).


**GTx79945 FCM Image**

Surface staining of human peripheral blood cells with anti-human CD18 (MEM-48) PE. Cells in the granulocyte gate were used for analysis.


**GTx79945 WB Image**

Western Blotting analysis (non-reducing conditions) of whole cell lysate using anti-human CD18 (MEM-48).  
Lane 1: KG-1a human acute myeloid leukemia cell line. Lane 2: HPB-ALL human peripheral blood T cell leukemia cell line



For full product information, images and publications, please visit our [website](https://www.genetex.com).