

# CD8 antibody [MEM-31] (PerCP)

**Cat. No. GTX79947**

<b>Host</b>	Mouse
<b>Clonality</b>	Monoclonal
<b>Isotype</b>	IgG2a
<b>Application</b>	FACS
<b>Reactivity</b>	Human

**Package**  
100 test

## APPLICATION

### Application Note

\*Optimal dilutions/concentrations should be determined by the researcher.

Suggested dilution	Recommended dilution
FACS	10 µl reagent / 100 µl of whole blood or 10 <sup>6</sup> cells in a suspension

Not tested in other applications.

### Product Note

This antibody recognizes a conformationally-dependent epitope of CD8. The antibody does not react with formaldehyde-fixed cells; negative in Western blotting application.

## PROPERTIES

<b>Form</b>	Liquid
<b>Buffer</b>	PBS
<b>Preservative</b>	15mM Sodium azide
<b>Storage</b>	Store as concentrated solution. Centrifuge briefly prior to opening vial. Store at 4°C. DO NOT FREEZE. Protect from light.
<b>Concentration</b>	Batch dependent (Please refer to the vial label for the specific concentration.)
<b>Immunogen</b>	Crude thymus membrane fraction.
<b>Purification</b>	Purified by size-exclusion chromatography
<b>Conjugation</b>	Peridinin-chlorophyll proteins (PerCP)

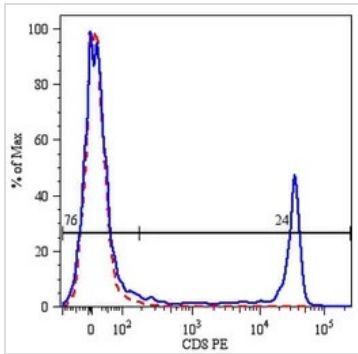
### Note

For laboratory research use only. Not for any clinical, therapeutic, or diagnostic use in humans or animals. Not for animal or human consumption.

Purchasers shall not, and agree not to enable third parties to, analyze, copy, reverse engineer or otherwise attempt to determine the structure or sequence of the product.



For full product information, images and publications, please visit our [website](#).

**DATA IMAGES**

**GTX79947 FACS Image**

Surface staining of human peripheral blood lymphocytes using anti-human CD8: PE (GTX78259).



For full product information, images and publications, please visit our [website](#).