

CD30 antibody [MEM-268] (FITC)

Cat. No. GTX79953

Host	Mouse
Clonality	Monoclonal
Isotype	IgG
Applications	FCM
Reactivity	Human

Package
100 test

Applications

Application Note

*Optimal dilutions/concentrations should be determined by the researcher.

Suggested dilution	Recommended dilution
FCM	20 µl reagent / 100 µl of whole blood or 10 ⁶ cells in a suspension
Not tested in other applications.	

Product Note This antibody recognizes extracellular part of CD30 (Ki-1 antigen).

Properties

Form	Liquid
Buffer	PBS
Preservative	15mM Sodium azide
Storage	Store as concentrated solution. Centrifuge briefly prior to opening vial. Store at 4°C. DO NOT FREEZE. Protect from light.
Concentration	Batch dependent (Please refer to the vial label for the specific concentration.)
Immunogen	Expression vector containing CD30 cDNA (booster suspension of THP-1 cell line)
Purification	Purified by size-exclusion chromatography
Conjugation	Fluorescein isothiocyanate (FITC) Wavelength

Note

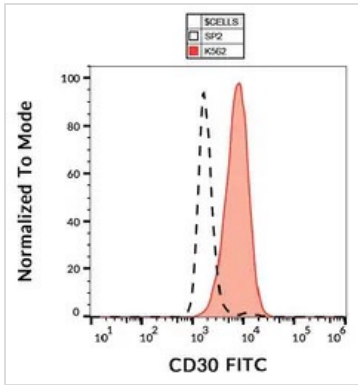
For laboratory research use only. Not for any clinical, therapeutic, or diagnostic use in humans or animals. Not for animal or human consumption.

Purchasers shall not, and agree not to enable third parties to, analyze, copy, reverse engineer or otherwise attempt to determine the structure or sequence of the product.



For full product information, images and publications, please visit our [website](#).

DATA IMAGES

**GTX79953 FCM Image**

FACS analysis of K562 cells using GTX79953 CD30 antibody [MEM-268] (FITC).



For full product information, images and publications, please visit our [website](#).