

HLA-DR1 antibody [MEM-267] (PE)

Cat. No. GTX79956

Host	Mouse
Clonality	Monoclonal
Isotype	IgG2b
Application	WB, FACS
Reactivity	Human

Reference (1)
Package
100 µg

APPLICATION

Application Note

*Optimal dilutions/concentrations should be determined by the researcher.

Suggested dilution	Recommended dilution
WB	Assay dependent
FACS	Assay dependent

Not tested in other applications.

Calculated MW	30 kDa. (Note)
Product Note	The antibody MEM-267 specifically binds to the empty but not peptide-loaded form of HLA-DR1.

PROPERTIES

Form	Liquid
Buffer	PBS
Preservative	15mM Sodium azide
Storage	Store as concentrated solution. Centrifuge briefly prior to opening vial. Store at 4°C. DO NOT FREEZE. Protect from light.
Concentration	0.1 mg/ml (Please refer to the vial label for the specific concentration.)
Immunogen	Purified, insoluble DR1 beta chain (DRB1*0101) expressed in E. coli inclusion bodies.
Purification	Purified by size-exclusion chromatography
Conjugation	Phycoerythrin (PE)

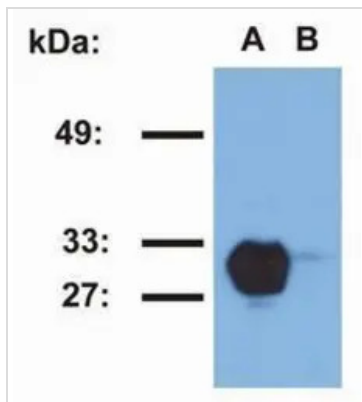
Note

For laboratory research use only. Not for any clinical, therapeutic, or diagnostic use in humans or animals. Not for animal or human consumption.

Purchasers shall not, and agree not to enable third parties to, analyze, copy, reverse engineer or otherwise attempt to determine the structure or sequence of the product.



For full product information, images and publications, please visit our [website](#).

DATA IMAGES

GTX79956 WB Image

Western blotting analysis of HLA-DR1 in Raji (A) and Jurkat (B) cell lines using MEM-267 antibody.



For full product information, images and publications, please visit our [website](https://www.genetex.com).