

CD44 antibody [MEM-263] (PE)

Cat. No. GTX79959

Host	Mouse
Clonality	Monoclonal
Isotype	IgG1
Applications	WB, FCM
Reactivity	Human, Dog, Pig

References (1)
Package
100 test

Applications

Application Note

*Optimal dilutions/concentrations should be determined by the researcher.

Suggested dilution	Recommended dilution
WB	Assay dependent
FCM	20 µl reagent / 100 µl of whole blood or 10 ⁶ cells in a suspension

Not tested in other applications.

Calculated MW	82 kDa. (Note)
Product Note	This antibody reacts with extracellular (N-terminal) domain of standard CD44 (Phagocyte glycoprotein 1).

Properties

Form	Liquid
Buffer	PBS
Preservative	15mM Sodium azide
Storage	Store as concentrated solution. Centrifuge briefly prior to opening vial. Store at 4°C. DO NOT FREEZE. Protect from light.
Concentration	Batch dependent (Please refer to the vial label for the specific concentration.)
Immunogen	COS-7 cells (African Green Monkey).
Purification	Purified by size-exclusion chromatography
Conjugation	Phycoerythrin (PE) Wavelength

Note

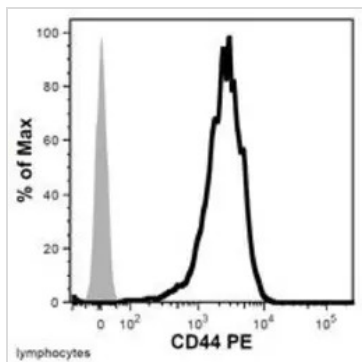
For laboratory research use only. Not for any clinical, therapeutic, or diagnostic use in humans or animals. Not for animal or human consumption.

Purchasers shall not, and agree not to enable third parties to, analyze, copy, reverse engineer or otherwise attempt to determine the structure or sequence of the product.



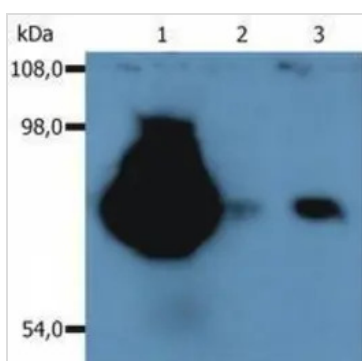
For full product information, images and publications, please visit our [website](#).

DATA IMAGES



GTX79959 FCM Image

Flow cytometry analysis of human peripheral blood (lymphocyte gate) using anti-CD44 (MEM-263) PE conjugate.



GTX79959 WB Image

Western Blotting analysis (non-reducing conditions) of isolated peripheral blood lymphocytes of various species using anti-CD44 (MEM-263). Lane 1: lysate of human PBL. Lane 2: lysate of canine PBL. Lane 3: lysate of porcine PBL



For full product information, images and publications, please visit our [website](https://www.genetex.com).