

CD63 antibody [MEM-259] (PerCP)

Cat. No. GTX79964

Host	Mouse
Clonality	Monoclonal
Isotype	IgG1
Applications	ICC/IF, FCM
Reactivity	Human

References (9)

Package

100 test

Applications

Application Note

*Optimal dilutions/concentrations should be determined by the researcher.

Suggested dilution	Recommended dilution
ICC/IF	Assay dependent
FCM	10 µl reagent / 100 µl of whole blood or 10 ⁶ cells in a suspension

Not tested in other applications.

Properties

Form	Liquid
Buffer	PBS
Preservative	15mM Sodium azide
Storage	Store as concentrated solution. Centrifuge briefly prior to opening vial. Store at 4°C. DO NOT FREEZE. Protect from light.
Concentration	Batch dependent (Please refer to the vial label for the specific concentration.)
Immunogen	HPB-ALL T cell line
Purification	Purified by size-exclusion chromatography
Conjugation	Peridinin-chlorophyll proteins (PerCP) Wavelength

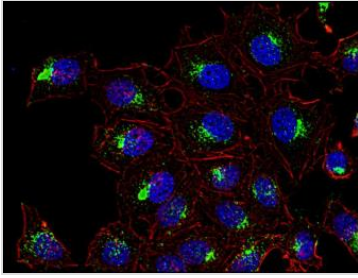
Note

For laboratory research use only. Not for any clinical, therapeutic, or diagnostic use in humans or animals. Not for animal or human consumption.

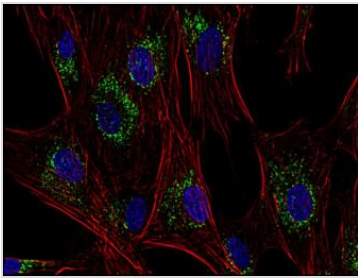
Purchasers shall not, and agree not to enable third parties to, analyze, copy, reverse engineer or otherwise attempt to determine the structure or sequence of the product.

For full product information, images and publications, please visit our [website](#).

DATA IMAGES

**GTX79964 ICC/IF Image**

Immunofluorescence staining of CD63 in human HeLa cell line using anti-CD63 (MEM-259; green; GTX28219). Actin cytoskeleton was decorated by phalloidin (red) and cell nuclei stained with DAPI (blue).

**GTX79964 ICC/IF Image**

Immunofluorescence staining of CD63 in human primary fibroblasts using anti-CD63 (MEM-259; green; GTX28219). Actin cytoskeleton was decorated by phalloidin (red) and cell nuclei stained with DAPI (blue).



For full product information, images and publications, please visit our [website](#).