

# IGF2R antibody [MEM-238] (APC)

**Cat. No. GTX79972**

<b>Host</b>	Mouse
<b>Clonality</b>	Monoclonal
<b>Isotype</b>	IgG1
<b>Application</b>	FACS
<b>Reactivity</b>	Human, Primate

Reference ( 4 )

Package

100 test

## APPLICATION

### Application Note

\*Optimal dilutions/concentrations should be determined by the researcher.

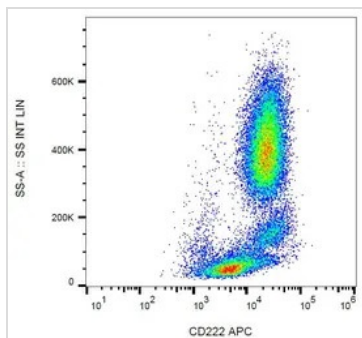
Suggested dilution	Recommended dilution
FACS	10 µl reagent / 100 µl of whole blood or 10 <sup>6</sup> cells in a suspension
Not tested in other applications.	
<b>Calculated MW</b>	274 kDa. ( <a href="#">Note</a> )
<b>Product Note</b>	This antibody recognizes an epitope between amino acids 192-697 of CD222 (IGF2 receptor).

## PROPERTIES

<b>Form</b>	Liquid
<b>Buffer</b>	PBS
<b>Preservative</b>	15mM Sodium azide
<b>Storage</b>	Store as concentrated solution. Centrifuge briefly prior to opening vial. Store at 4°C. DO NOT FREEZE. Protect from light.
<b>Concentration</b>	Batch dependent (Please refer to the vial label for the specific concentration.)
<b>Immunogen</b>	Recombinant Vaccinia virus encoding CD222.
<b>Purification</b>	Purified by size-exclusion chromatography
<b>Conjugation</b>	Allophycocyanin (APC)
<b>Note</b>	For laboratory research use only. Not for any clinical, therapeutic, or diagnostic use in humans or animals. Not for animal or human consumption.  Purchasers shall not, and agree not to enable third parties to, analyze, copy, reverse engineer or otherwise attempt to determine the structure or sequence of the product.



For full product information, images and publications, please visit our [website](#).

**DATA IMAGES**

**GTX79972 FACS Image**

FACS analysis of human peripheral blood using GTX79972 IGF2R antibody [MEM-238] (APC).



For full product information, images and publications, please visit our [website](#).