

CD16 antibody [MEM-154] (PE)

Cat. No. GTX79998

Host	Mouse
Clonality	Monoclonal
Isotype	IgG1
Applications	FCM
Reactivity	Human

References (1)

Package

100 test

Applications

Application Note

*Optimal dilutions/concentrations should be determined by the researcher.

Suggested dilution	Recommended dilution
FCM	20 µl reagent / 100 µl of whole blood or 10 ⁶ cells in a suspension

Note : Do not need a permeabilization step.

Not tested in other applications.

Product Note This antibody reacts with an epitope on CD16 antigen that is residing in proximity to FG loop (probably BC or C'E loop).

Properties

Form	Liquid
Buffer	PBS
Preservative	15mM Sodium azide
Storage	Store as concentrated solution. Centrifuge briefly prior to opening vial. Store at 4°C. DO NOT FREEZE. Protect from light.
Concentration	Batch dependent (Please refer to the vial label for the specific concentration.)
Immunogen	Human granulocytes
Purification	Purified by size-exclusion chromatography
Conjugation	Phycoerythrin (PE) Wavelength

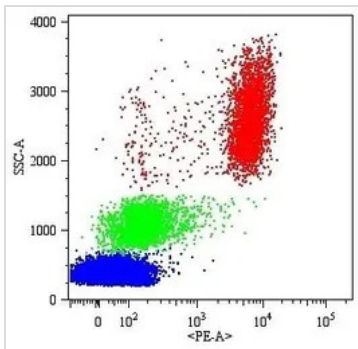
Note

For laboratory research use only. Not for any clinical, therapeutic, or diagnostic use in humans or animals. Not for animal or human consumption.

Purchasers shall not, and agree not to enable third parties to, analyze, copy, reverse engineer or otherwise attempt to determine the structure or sequence of the product.

For full product information, images and publications, please visit our [website](#).

DATA IMAGES

**GTX79998 FCM Image**

FACS analysis of human peripheral blood using GTX79998 CD16 antibody [MEM-154] (PE).



For full product information, images and publications, please visit our [website](#).