

## CD14 antibody [MEM-15] (FITC)

Cat. No. GTX79999

<b>Host</b>	Mouse
<b>Clonality</b>	Monoclonal
<b>Isotype</b>	IgG1
<b>Applications</b>	FCM
<b>Reactivity</b>	Human, Primate

References ( 1 )  
 Package  
 100 test

## Applications

## Application Note

\*Optimal dilutions/concentrations should be determined by the researcher.

Suggested dilution	Recommended dilution
FCM	20 µl reagent / 100 µl of whole blood or 10 <sup>6</sup> cells in a suspension

**Note : Do not need a permeabilization step.**

Not tested in other applications.

## Product Note

This antibody reacts with CD14, a 53-55 kDa GPI (glycosylphosphatidylinositol)-linked membrane glycoprotein expressed on monocytes, macrophages and weakly on granulocytes; also expressed by most tissue macrophages. And this antibody also reacts with soluble forms of CD14 found in serum and in the urine of some nephrotic patients.

## Properties

<b>Form</b>	Liquid
<b>Buffer</b>	PBS
<b>Preservative</b>	15mM Sodium azide
<b>Storage</b>	Store as concentrated solution. Centrifuge briefly prior to opening vial. Store at 4°C. DO NOT FREEZE. Protect from light.
<b>Concentration</b>	Batch dependent (Please refer to the vial label for the specific concentration.)
<b>Immunogen</b>	A crude mixture of human urinary proteins precipitated by ammonium sulphate from the urine of a patient suffering from proteinuria.
<b>Purification</b>	Purified by size-exclusion chromatography
<b>Conjugation</b>	Fluorescein isothiocyanate (FITC) <a href="#">Wavelength</a>

## Note

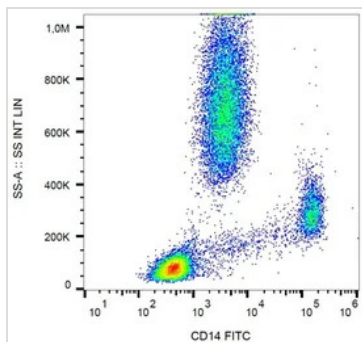
For laboratory research use only. Not for any clinical, therapeutic, or diagnostic use in humans or animals. Not for animal or human consumption.

Purchasers shall not, and agree not to enable third parties to, analyze, copy, reverse engineer or otherwise attempt to determine the structure or sequence of the product.



For full product information, images and publications, please visit our [website](#).

## DATA IMAGES

**GTX79999 FCM Image**

FACS analysis of human peripheral blood using GTX79999 CD14 antibody [MEM-15] (FITC).



For full product information, images and publications, please visit our [website](#).