

HLA Class I antibody [MEM-147] (PE)

Cat. No. GTX80010

Host	Mouse
Clonality	Monoclonal
Isotype	IgG1
Applications	FCM
Reactivity	Human

Package
100 µg

Applications

Application Note

*Optimal dilutions/concentrations should be determined by the researcher.

Suggested dilution	Recommended dilution
FCM	Assay dependent

Not tested in other applications.

Product Note

This antibody recognizes native HLA-A2 in cytofluorometry and immunoprecipitation but not in Western blotting). The antibody MEM-147 is positive in Western blotting (non-reducing conditions) only with most HLA-B and HLA-C molecules, but not HLA-A. Reactivity is very similar to the classical antibody W6/32.

Properties

Form	Liquid
Buffer	PBS
Preservative	15mM Sodium azide
Storage	Store as concentrated solution. Centrifuge briefly prior to opening vial. Store at 4°C. DO NOT FREEZE. Protect from light.
Concentration	0.1 mg/ml (Please refer to the vial label for the specific concentration.)
Immunogen	PHA-activated peripheral blood lymphocytes
Purification	Purified by size-exclusion chromatography
Conjugation	Phycoerythrin (PE) Wavelength

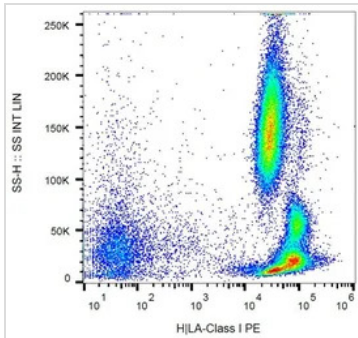
Note

For laboratory research use only. Not for any clinical, therapeutic, or diagnostic use in humans or animals. Not for animal or human consumption.

Purchasers shall not, and agree not to enable third parties to, analyze, copy, reverse engineer or otherwise attempt to determine the structure or sequence of the product.



For full product information, images and publications, please visit our [website](#).

DATA IMAGES

GTX80010 FCM Image

FACS analysis of human peripheral blood using GTX80010 HLA Class I antibody [MEM-147] (PE).



For full product information, images and publications, please visit our [website](#).