

HLA-DR + HLA-DP antibody [MEM-136] (Biotin)

Cat. No. GTX80012

Host	Mouse
Clonality	Monoclonal
Isotype	IgG1
Application	WB, IHC-P, FACS, IP
Reactivity	Human

Package
100 µg

APPLICATION

Application Note

*Optimal dilutions/concentrations should be determined by the researcher.

Suggested dilution	Recommended dilution
WB	Assay dependent
IHC-P	Assay dependent
FACS	Assay dependent
IP	Assay dependent

Not tested in other applications.

Product Note This antibody reacts with alpha/beta dimer as well as with dissociated beta-subunit.

PROPERTIES

Form	Liquid
Buffer	PBS
Preservative	15mM Sodium azide
Storage	Store as concentrated solution. Centrifuge briefly prior to opening vial. Store at 4°C. DO NOT FREEZE.
Concentration	1 mg/ml (Please refer to the vial label for the specific concentration.)
Immunogen	PHA-activated peripheral blood lymphocytes.
Purification	Purified IgG
Conjugation	Biotin The reagent is free of unconjugated biotin.

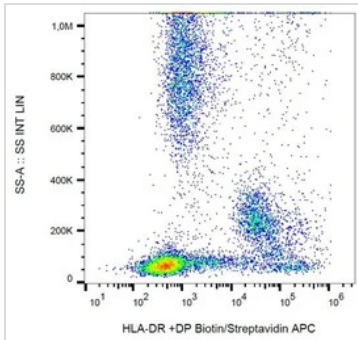
Note

For laboratory research use only. Not for any clinical, therapeutic, or diagnostic use in humans or animals. Not for animal or human consumption.

Purchasers shall not, and agree not to enable third parties to, analyze, copy, reverse engineer or otherwise attempt to determine the structure or sequence of the product.



For full product information, images and publications, please visit our [website](#).

DATA IMAGES

GTX80012 FACS Image

FACS analysis of human peripheral blood using GTX80012 HLA-DR + HLA-DP antibody [MEM-136] (Biotin).



For full product information, images and publications, please visit our [website](https://www.genetex.com).