

HLA Class I antibody [MEM-123] (PE)

Cat. No. GTX80018

Host	Mouse
Clonality	Monoclonal
Isotype	IgG3
Applications	FCM
Reactivity	Human, Bovine, Primate

Package
100 µg

Applications

Application Note

*Optimal dilutions/concentrations should be determined by the researcher.

Suggested dilution	Recommended dilution
FCM	Assay dependent

Not tested in other applications.

Product Note

This antibody reacts with all human classical MHC Class I molecules (major histocompatibility complex) in native cell-surface forms as well as with human HLA-G cDNA transfected cells. The antibody MEM-123 completely blocks binding of classical W6/32 to surface-expressed HLA-G, but does not cross-blocks the antibody MEM-G/9.

Properties

Form	Liquid
Buffer	PBS
Preservative	15mM Sodium azide
Storage	Store as concentrated solution. Centrifuge briefly prior to opening vial. Store at 4°C. DO NOT FREEZE. Protect from light.
Concentration	0.1 mg/ml (Please refer to the vial label for the specific concentration.)
Immunogen	COS-7 African green monkey kidney cells
Purification	Purified by size-exclusion chromatography
Conjugation	Phycoerythrin (PE) Wavelength

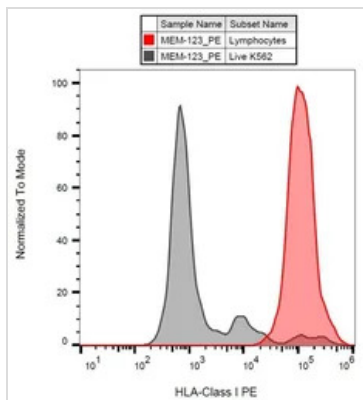
Note

For laboratory research use only. Not for any clinical, therapeutic, or diagnostic use in humans or animals. Not for animal or human consumption.

Purchasers shall not, and agree not to enable third parties to, analyze, copy, reverse engineer or otherwise attempt to determine the structure or sequence of the product.



For full product information, images and publications, please visit our [website](#).

DATA IMAGES

GTX80018 FCM Image

FACS analysis of K562 cells using GTX80018 HLA Class I antibody [MEM-123] (PE).



For full product information, images and publications, please visit our [website](#).